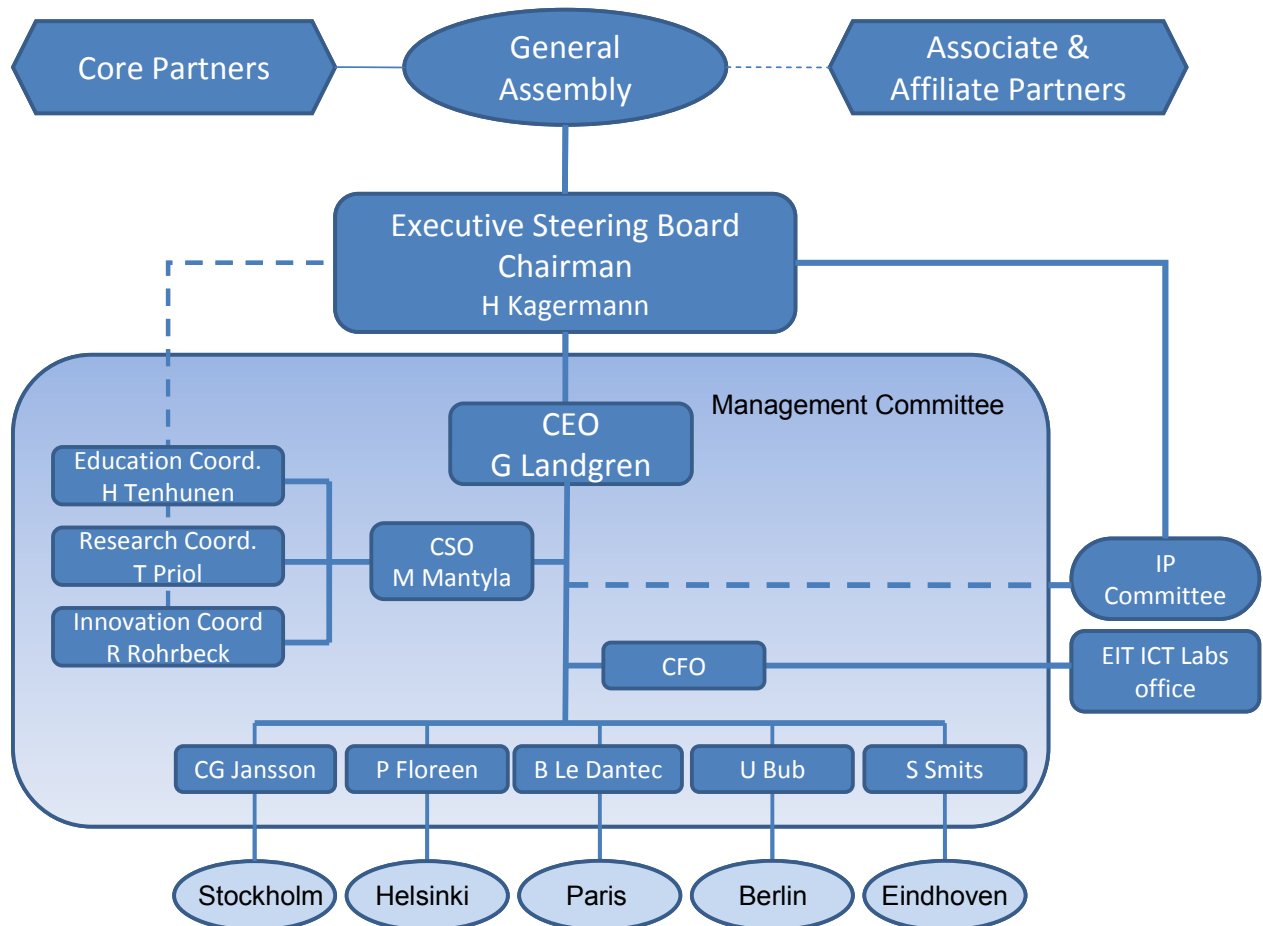


EIT ICT KIC

Organisation



Il y a une general assembly avec les core partners (l'IT par exemple), des associates partners et des affiliate partners (les poles par exemple)

Il y a un executive steering board avec un chairman et des board members

Il y a un management committee avec un CEO, CFO, Chief Strategy Officer Martti Mäntylä TKK Finland, les node directors (Bruno Ledantec INRIA pour la France) et Hannu Tenhunen KTH Coordinator Education, Thierry Priol INRIA Coordinator Research, René Rohrbeck TU Berlin Coordinator Innovation

Et un Kic Central office

Competences

- Cyber-Physical Systems
- Enabling the Internet of the Future
- Communication Technologies
- Computing in the Cloud
- Trust, Security & Privacy
- ICT-Mediated Human Activity
- Techno-Economics

Thematics

- Smart Spaces
including service-centered home
- Intelligent Transportation Systems (novel forms of safer & sustainable traffic and transportation systems)
- Smart Energy Systems
smart energy management, Green ICT
- Health & well-being (including ambient assisted living, digital medicine)
- Future Media and Content Delivery
entertainment, education, accessing media
- Digital Cities

towards intelligent and sustainable digital cities

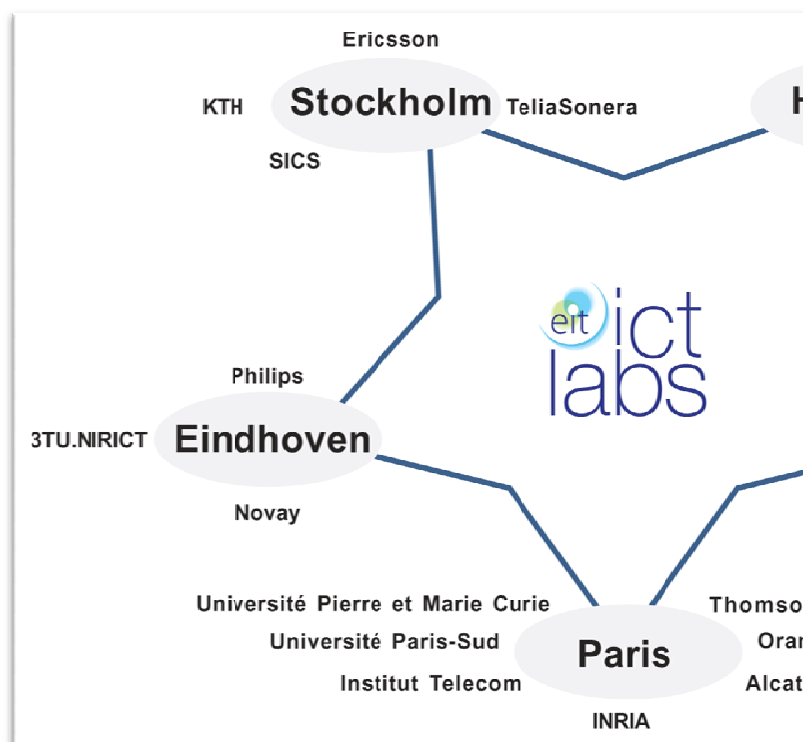
coordinateur : Khaldoun Al Agha <Khaldoun.ALAgha@lri.fr>

Instruments

Education	Research	Innovation
Graduate School with specialization matching the areas of excellence of nodes and inter-node mobility	Thematic workshops Consolidate goals and create networks	Entrepreneurship Support Systems mentoring, coaching, incubation, ... driver : René Rohrbeck Lead : Iddo Bante France : PHI Letellier
Master School which has an emphasis on hands-on entrepreneurship & mobility across nodes	Thematic area coordination To facilitate creating added value to chosen thematic areas	EIT Innovation Radar including cross-node virtual expert panel driver : Bo Karlson Lead : Nico Thom/ Bo Karlson France :
Schools and Camps such as code camp (SW developm.), design camp (product design) and business camps (venturing)	Common testbeds, Labs & simulation tools incl. experience, design & mobile labs	Best-Practice Benchmarking for designing KIC management driver : René Rohrbeck Lead : Alexander Lang France :
Outreach Program, Continuous Training and Embedded Learning both for stake holders & non-stake holders incl. professional doctorate	Research dissemination & networking incl. books, technical reports, DB	Business Entrepreneur club driver : Mika Naumanen Lead : PHI Letellier en 2011 France : PHI Letellier
Mobility Program teacher and student mobility	Mobility program including academia & industry crossover program	Access to finance ensure capital availability for all stages to identify and polish innovation driver : Jérôme Chifflet Lead : Pär Hedberg France : Jérôme Chifflet
	Top talent playing field creation for designing KIC management	Preventure Loans driver : Ido Bante Lead : Patrick bliek France : Jérôme Chifflet
	Core research target thematic innov. in chosen areas	Office Space 2.0 Innovative office infrastructures driver : Jaap van der Heijden Lead : France :

	Big Joint Idea Projects drive risky ideas with high innovation potential (start 2012)

Partenaires



Nœud français

CSO du nœud français = Banatre, vinod

Resp recherche = Kofman

Resp education P Spathis LIP6

Resp Innovation Chifflet

Office manager Rennes = F Bodin

Office manager Saclay = Robin

Office manager Sofia = Chifflet

Implication Institut Télécom