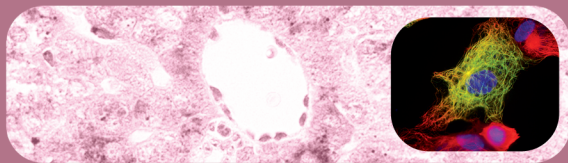


▶ THE BIOIMAGING TRACK

Bioimaging is an exciting and growing field which resides at the interfaces between engineering, mathematics, computer sciences, chemistry, physics, life sciences, and medicine. This field focuses on health improvement by using imaging modalities to advance diagnosis, treatment and/or prevention of human diseases.

The Bioimaging master track offers a high-level interdisciplinary education program supported by the complementary skills of University Paris Descartes and Engineering Schools of ParisTech. A large network of research labs provides students access to industrial and experimental imaging systems based on innovative technologies.



PROFESSIONAL OPENINGS:

- ▶ Academic laboratories
- ▶ Industrial Research
- ▶ Imaging software editors
- ▶ Radiology Departments at hospitals
- ▶ PHD programs in BME, computer sciences, mathematics, chemistry, biology

▶ HOW TO APPLY ?

Download the application form on
<http://www.bme-paris.org>
Deadline: June 18th 2010

▶ CRITERIA FOR ADMISSION

Students must hold a Bachelor degree (equivalent of 180 ECTS in the EU system) in sciences or medicine to apply for admission in the first year. Graduate students at a Master level (equivalent of 240 ECTS in the EU system) can apply for admission in the second year.

▶ MORE INFORMATION

<http://www.bme-paris.org>

▶ CONTACT INFORMATION

Master BME-Paris
Université Paris Descartes
45, rue des Saints Pères - 75006 Paris – France
BIM@bme-paris.org

TRACK ADVISORS:

▶ SUB-TRACK Imaging from Molecule to Human (IMH)

Florence Cloppet
Université Paris Descartes - Computer Science

Catherine Oppenheim
Université Paris Descartes - Medicine

▶ IMH@bme-paris.org

▶ SUB-TRACK Imaging Modalities and Processing (IMP)

Elsa Angelini
Telecom ParisTech

Catherine Oppenheim
Université Paris Descartes - Medicine

▶ IMP@bme-paris.org

Biomedical Engineering Master

... BioIMaging (BIM)



IMAGING FOR MEDICINE & BIOLOGY ACQUISITION & PROCESSING



BIOIMAGING TRACK PROGRAM

