

Quelques Tunnels Sécurisés

PPTP, SSH, IPSEC, TLS/DTLS

Pascal.Urien@Telecom-ParisTech.fr

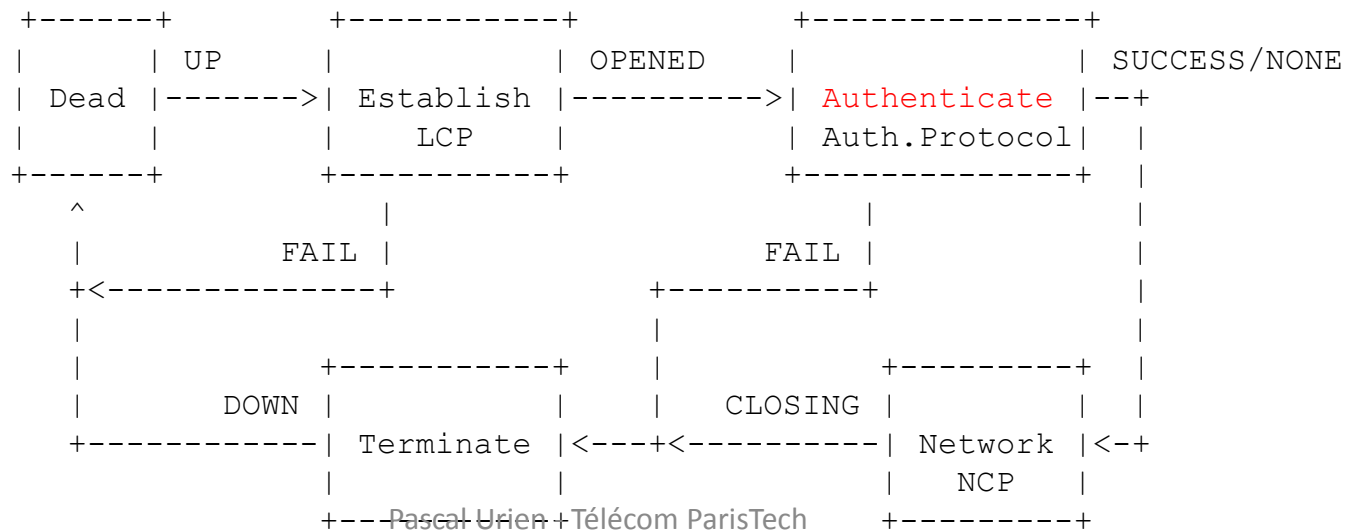
PPTP

Point to Point Protocol

Au sujet de PPP

- PPP (RFC 1661, 1994) est un protocole très utilisé par les MODEMs et les accès DSL
- La trame PPP utilise le format HDLC (ISO 3309).
- L'authentification PPP est réalisée avant l'allocation d'une adresse IP
- Protocol Field Value
 - 0x0021 : IP
 - 0xC021 : Link Control Protocol (LCP)
 - 0x8021 : Network Control Protocol (NCP)
 - 0xC023 : Password Authentication Protocol (PAP)
 - 0xC025 : Link Quality Report (LQR)
 - 0xC223 : Challenge Handshake Authentication Protocol (CHAP)

Flag 0x7E	Address 0xFF	Control 03	Protocol 2 bytes	information 1500 octets max	CRC 2 bytes	Flag 0x7E
--------------	-----------------	---------------	---------------------	--------------------------------	----------------	--------------



PPP Authentication 1/2

LCP Coding

```
0 1 2 3 4 5 6 7 8 9 0 1 2 3 4 5 6 7 8 9 0 1 2 3 4 5 6 7 8 9 0 1
| Code | Identifier | Length | Data ...
LCP (code), 1-Request 2-Ack 3-Nak 4-Reject C-IDENTITY
```

LCP Option=3, Authentication Request

```
0 1 2 3 4 5 6 7 8 9 0 1 2 3 4 5 6 7 8 9 0 1 2 3 4 5 6 7 8 9 0 1
| Type=3 | Length=5 | Authentication-Protocol= c223 |
|Algorithm=5 MD5|
```

CHAP coding

```
0 1 2 3 4 5 6 7 8 9 0 1 2 3 4 5 6 7 8 9 0 1 2 3 4 5 6 7 8 9 0 1
| Code | Identifier | Length | Data ...
```

Code

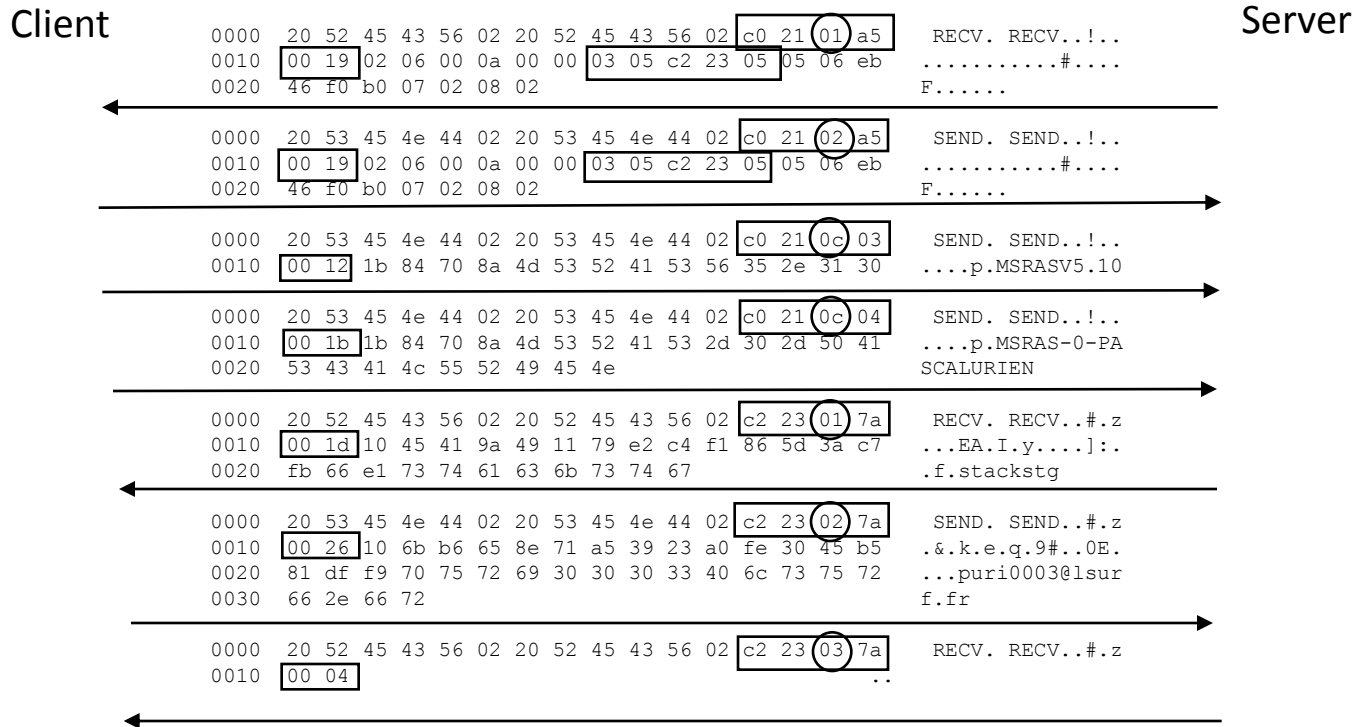
1- Challenge, 2-Response

```
0 1 2 3 4 5 6 7 8 9 0 1 2 3 4 5 6 7 8 9 0 1 2 3 4 5 6 7 8 9 0 1
| Code | Identifier | Length | Value-Size | Value ...
| Name ...
```

3-Success, 4-Failure

```
0 1 2 3 4 5 6 7 8 9 0 1 2 3 4 5 6 7 8 9 0 1 2 3 4 5 6 7 8 9 0 1
| Code | Identifier | Length | Message ...
```

PPP Authentication 2/2



PPTP Point to Point Protocol

- PPTP utilise le port serveur 1723
- Il établit une connexion TCP entre un client PPTP et un serveur PPTP
- PPTP permet d'ouvrir plusieurs sessions PPP, optionnellement chiffrées selon le protocole MPPE (Microsoft Point To Point Encryption).
- Chaque session PPP est encapsulée par un entête GRE (*Generic Routing Encapsulation*) et identifiée par un attribut CallID

PPTP: principaux messages

- Start-Control-Connection-Request
 - Ce message est envoyé par le client PPTP pour établir une connexion de contrôle PPTP.
- Start-Control-Connection-Reply
 - Réponse au message Start-Control-Connection-Request.
- Set-Link-Info
 - Ce message émis par le client PPTP ou le serveur PPTP pour fixer les options PPP négociées.

PPTP: principaux messages

- Call-Clear-Request
 - Envoyé par le client PPTP pour la fermeture d'un tunnel PPP.
- Call-Disconnect-Notify
 - Fermeture d'un tunnel PPP par le serveur PPTP en réponse à Call-Clear-Request ou pour une autre raison
- Stop-Control-Connection-Request
 - Notification par le client PPTP ou le serveur PPTP de la fermeture d'une session PPTP.
- Stop-Control-Connection-Reply
 - Réponse au message Stop-Control-Connection-Request

PPTP: principaux messages

- **Outgoing-Call-Request**
 - Envoyé par le client PPTP pour créer un tunnel PPTP.
 - Comporte un identifiant d'appel (CallID) qui est utilisé dans l'en-tête GRE pour identifier le trafic d'un tunnel spécifique.
- **Outgoing-Call-Reply**
 - Réponse du serveur PPTP au message Outgoing-Call-Request
 - Comporte CallID et un attribut PeerCallID

Outgoing-Call-Request

```
119 19.989371000 192.168.2.33 137.194.4.241 PPTP 222 Outgoing-Call-Request
+ Frame 119: 222 bytes on wire (1776 bits), 222 bytes captured (1776 bits) on interface 0
+ Ethernet II, Src: LiteonTe_4b:0f:54 (30:10:b3:4b:0f:54), Dst: Netgear_3e:a1:76 (e4:f4:c6:3e:a1:76)
+ Internet Protocol Version 4, Src: 192.168.2.33 (192.168.2.33), Dst: 137.194.4.241 (137.194.4.241)
+ Transmission Control Protocol, Src Port: 52253 (52253), Dst Port: 1723 (1723), Seq: 157, Ack: 157, Len: 168
- Point-to-Point Tunneling Protocol
  Length: 168
  Message type: Control Message (1)
  Magic Cookie: 0x1a2b3c4d (correct)
  Control Message Type: Outgoing-Call-Request (7)
  Reserved: 0000
  Call ID: 28781
  Call Serial Number: 2
  Minimum BPS: 300
  Maximum BPS: 100000000
  Bearer Type: Either access supported (3)
  Framing Type: Either Framing supported (3)
  Packet Receive Window Size: 64
  Packet Processing Delay: 0
  Phone Number Length: 0
  Reserved: 0000
  Phone Number:
  Subaddress:
```

```
0000 e4 f4 c6 3e a1 76 30 10 b3 4b 0f 54 08 00 45 00 ...>.v0. .K.T..E.
0010 00 d0 4b 88 40 00 80 06 5d 23 c0 a8 02 21 89 c2 ..K.@... ]#...!..
0020 04 f1 cc 1d 06 bb 18 74 73 c9 56 79 dc fc 50 18 .....t s.Vy..P.
0030 10 dd 0a 3f 00 00 00 a8 00 01 1a 2b 3c 4d 00 07 ...?... ..+<M.
0040 00 00 70 6d 00 02 00 00 01 2c 05 f5 e1 00 00 00 ..pm.... ,.....
0050 00 03 00 00 00 03 00 40 00 00 00 00 00 00 00 .....@ .....
0060 00 00 00 00 00 00 00 00 00 00 00 00 00 00 .....
0070 00 00 00 00 00 00 00 00 00 00 00 00 00 00 .....
0080 00 00 00 00 00 00 00 00 00 00 00 00 00 00 .....
0090 00 00 00 00 00 00 00 00 00 00 00 00 00 00 .....
00a0 00 00 00 00 00 00 00 00 00 00 00 00 00 00 .....
00b0 00 00 00 00 00 00 00 00 00 00 00 00 00 00 .....
00c0 00 00 00 00 00 00 00 00 00 00 00 00 00 00 .....
00d0 00 00 00 00 00 00 00 00 00 00 00 00 00 00 .....
```

Outgoing-Call-Reply

No.	Time	Source	Destination	Protocol	Length	Info
115	19.939891000	192.168.2.33	137.194.4.241	PPTP	210	Start-Control-Connection-Request
118	19.989120000	137.194.4.241	192.168.2.33	PPTP	210	Start-Control-Connection-Reply
119	19.989371000	192.168.2.33	137.194.4.241	PPTP	222	outgoing-Call-Request
121	20.034242000	137.194.4.241	192.168.2.33	PPTP	86	outgoing-Call-Reply
124	20.043042000	192.168.2.33	137.194.4.241	PPTP	78	Set-Link-Info
136	20.203626000	192.168.2.33	137.194.4.241	PPTP	78	Set-Link-Info
1738	79.938646000	192.168.2.33	137.194.4.241	PPTP	70	Echo-Request
1739	79.980264000	137.194.4.241	192.168.2.33	PPTP	74	Echo-Reply
2508	135.511235000	192.168.2.33	137.194.4.241	PPTP	78	Set-Link-Info
2512	135.653706000	192.168.2.33	137.194.4.241	PPTP	70	Call-Clear-Request

```

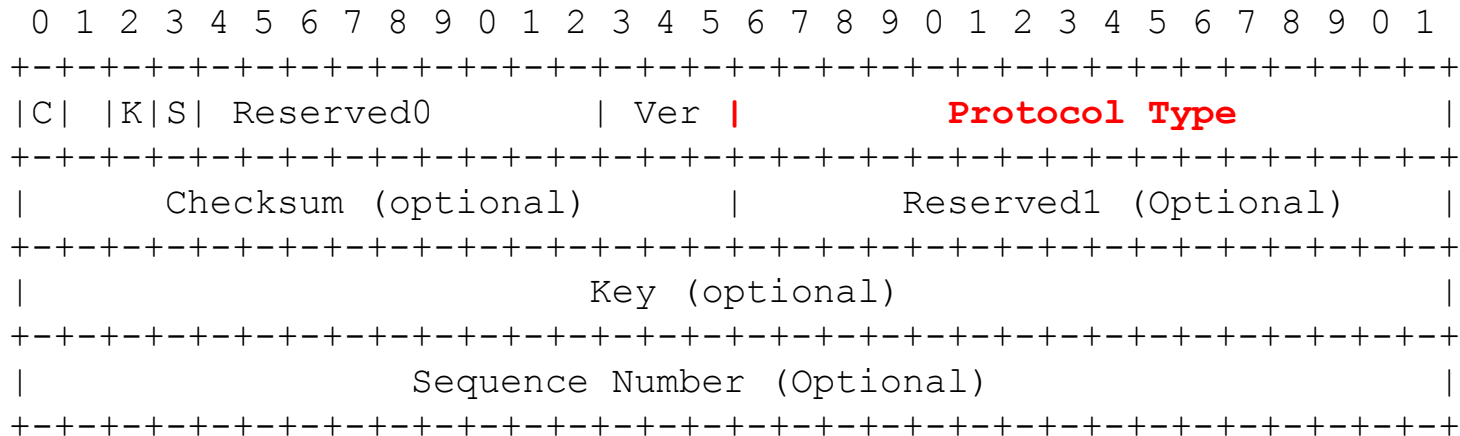
+ Frame 121: 86 bytes on wire (688 bits), 86 bytes captured (688 bits) on interface 0
+ Ethernet II, Src: Netgear_3e:a1:76 (e4:f4:c6:3e:a1:76), Dst: LiteonTe_4b:0f:54 (30:10:b3:4b:0f:54)
+ Internet Protocol Version 4, Src: 137.194.4.241 (137.194.4.241), Dst: 192.168.2.33 (192.168.2.33)
+ Transmission Control Protocol, Src Port: 1723 (1723), Dst Port: 52253 (52253), Seq: 157, Ack: 325, Len: 32
- Point-to-Point Tunnelling Protocol
  Length: 32
  Message type: Control Message (1)
  Magic Cookie: 0x1a2b3c4d (correct)
  Control Message Type: outgoing-Call-Reply (8)
  Reserved: 0000
  Call ID: 34176
  Peer Call ID: 28781
  Result Code: Connected (1)
  Error Code: None (0)
  Cause Code: 0
  Connect Speed: 100000000
  Packet Receive Window Size: 64
  Packet Processing Delay: 0
  Physical Channel ID: 0
  
```

```

0000 30 10 b3 4b 0f 54 e4 f4 c6 3e a1 76 08 00 45 00 0..K.T.. .>.v..E.
0010 00 48 ac 2c 40 00 34 06 49 07 89 c2 04 f1 c0 a8 .H.,@.4. I.....
0020 02 21 06 bb cc 1d 56 79 dc fc 18 74 74 71 50 18 .!....vy ...ttqP.
0030 20 9d 75 99 00 00 00 20 00 01 1a 2b 3c 4d 00 08 .u..... +<M..
0040 00 00 85 80 70 6d 01 00 00 00 05 f5 e1 00 00 40 ..@.....TélécomParisTech...@
0050 00 00 00 00 00 00 .....
```

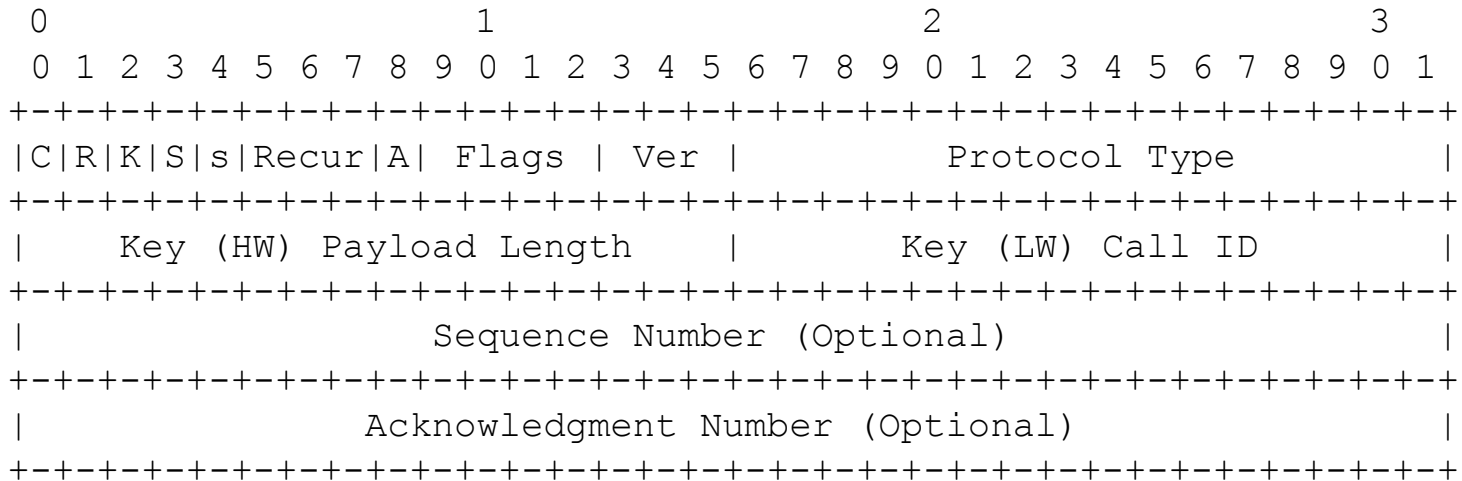
RFC 2890, Generic Routing Encapsulation (GRE)

- GRE est un protocole d'encapsulation au dessus de IP (PTCOL=47=0x2F)
- L'identifiant du protocole encapsulé est 0x880B pour PPP



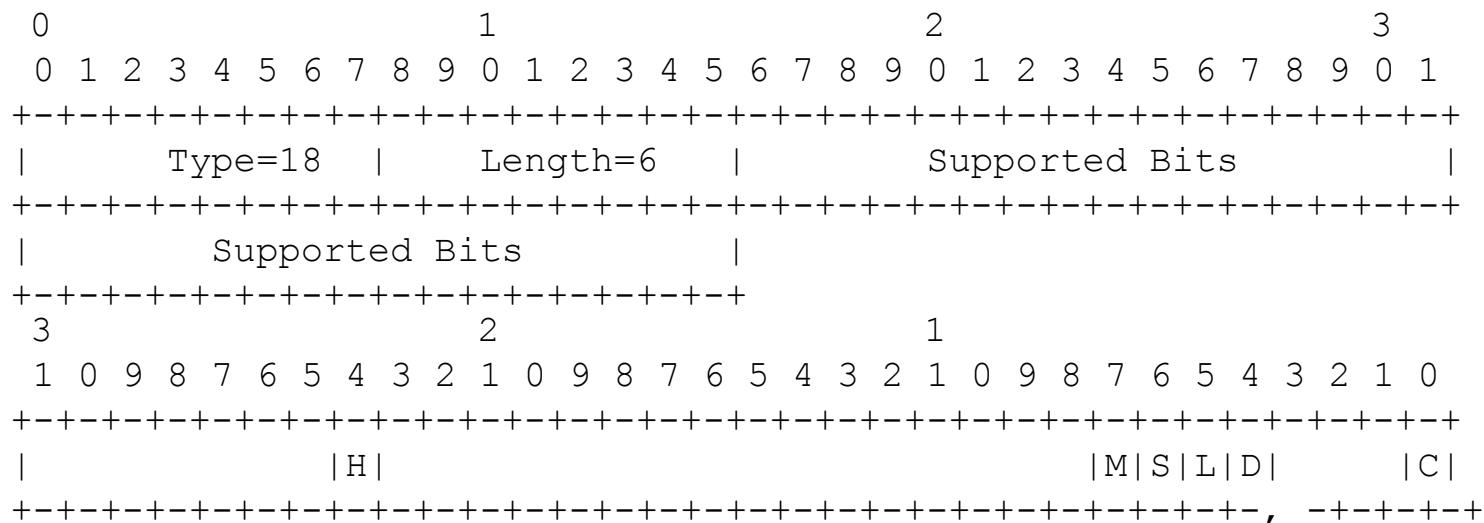
K: Key Present, S: sequence Present

Enhanced GRE (PPTP)



MPPE: Microsoft Point to Point Encryption – RFC 3078

- L'option MPPE est négociée via le protocole CCP Configuration (Compression Control Protocol), et l'option 18
- Le PID (PPP) du protocole MPPE est 0x00FD
- Les paquets PPP sont chiffrés par l'algorithme RC4
 - 00FD [paquet PPP Chiffré]
 - MPPE chiffre les protocoles PPP dont les identifiants sont dans l'intervalle [0x0021, 0x00FA]
- MPPE ne peut s'appliquer que dans l'état *Opened* du *CCP Control Protocol*.



128-bit encryption ('S' bit set), 56-bit encryption ('M' bit set), 40-bit encryption ('L' bit set)

```

Internet Protocol Version 4, Src: 137.194.4.241 (137.194.4.241), Dst: 192.168.2.33 (192.168.2.33)
  Version: 4
  Header Length: 20 bytes
  Differentiated Services Field: 0x00 (DSCP 0x00: Default; ECN: 0x00: Not-ECT (Not ECN-Capable Transport))
  Total Length: 48
  Identification: 0xac3c (44092)
  Flags: 0x00
  Fragment offset: 0
  Time to live: 52
  Protocol: Generic Routing Encapsulation (47)
  Header checksum: 0x88e6 [validation disabled]
  Source: 137.194.4.241 (137.194.4.241)
  Destination: 192.168.2.33 (192.168.2.33)
  [Source GeoIP: Unknown]
  [Destination GeoIP: Unknown]

```

MPPE: Microsoft Point to Point Encryption

```

Generic Routing Encapsulation (PPP)
  Flags and Version: 0x3081
  Protocol Type: PPP (0x880b)
  Payload Length: 12
  Call ID: 28781
  Sequence Number: 12
  Acknowledgment Number: 10

```

```

Point-to-Point Protocol
  Protocol: Compression Control Protocol (0x80fd)

```

```

PPP Compression Control Protocol
  Code: Configuration Request (1)
  Identifier: 2 (0x02)
  Length: 10

```

```

Options: (6 bytes), Microsoft PPE/PPC
  Microsoft PPE/PPC

```

Type: Microsoft PPE/PPC (18)

Length: 6

```

Supported Bits: 0x00000040, 5
  .... 0 .... = H: Stateless mode OFF
  .... 0... = M: 56-bit encryption OFF
  .... 1.. = S: 128-bit encryption ON
  .... 0. = L: 40-bit encryption OFF
  .... 0 = D: obsolete (should ALWAYS be 0)
  .... 0 = C: No desire to negotiate MPPC

```

```

0000 30 10 b3 4b 0f 54 e4 f4 c6 3e a1 76 08 00 45 00 0..K.T..>.v..E.
0010 00 30 ac 3c 00 00 34 2f 88 e6 89 c2 04 f1 c0 a8 .0.<..4/.....
0020 02 21 30 81 88 0b 00 0c 70 6d 00 00 00 0c 00 00 .!o.....pm.....
0030 00 0a 80 fd 01 02 00 0a 12 06 00 00 00 40 .....@

```

- [-] Internet Protocol Version 4, SRC: 192.168.2.33 (192.168.2.33), DST: 137.194.4.241 (137.194.4.241)
 - Version: 4
 - Header Length: 20 bytes
 - [+] Differentiated Services Field: 0x00 (DSCP 0x00: Default; ECN: 0x00: Not-ECT (Not ECN-Capable Transport))
 - Total Length: 48
 - Identification: 0x4b9b (19355)
 - [+] Flags: 0x00
 - Fragment offset: 0
 - Time to live: 128
 - Protocol: Generic Routing Encapsulation (47)
 - [+] Header checksum: 0x9d87 [validation disabled]
 - Source: 192.168.2.33 (192.168.2.33)
 - Destination: 137.194.4.241 (137.194.4.241)
 - [Source GeoIP: Unknown]
 - [Destination GeoIP: Unknown]
- [-] Generic Routing Encapsulation (PPP)
 - [+] Flags and Version: 0x3081
 - Protocol Type: PPP (0x880b)
 - Payload Length: 12
 - Call ID: 34176
 - Sequence Number: 13
 - Acknowledgment Number: 12
- [-] Point-to-Point Protocol
 - Protocol: Compression Control Protocol (0x80fd)
- [-] PPP Compression Control Protocol
 - Code: Configuration Ack (2)
 - Identifier: 2 (0x02)
 - Length: 10
 - [+] Options: (6 bytes), Microsoft PPE/PPC
 - [+] Microsoft PPE/PPC
 - Type: Microsoft PPE/PPC (18)
 - Length: 6
 - [+] Supported Bits: 0x00000040, s
 -0..... = H: Stateless mode OFF
 -0... = M: 56-bit encryption OFF
 -1.. = S: 128-bit encryption ON
 -0. = L: 40-bit encryption OFF
 -0 = D: obsolete (should ALWAYS be 0)
 -0 = C: No desire to negotiate MPPC

MPPE: Microsoft Point to Point Encryption

```

0000 e4 f4 c6 3e a1 76 30 10 b3 4b 0f 54 08 00 45 00 ...>.v0. .K.T..E.
0010 00 30 4b 9b 00 00 80 2f 9d 87 c0 a8 02 21 89 c2 .OK..../.....!..
0020 04 f1 30 81 88 0b 00 0c 85 80 00 00 00 0d 00 00 ..P...D...
0030 00 0c 80 fd 02 02 00 0a 12 06 00 00 00 40 ..@.....@

```


RFC 3079 MPPE Key Derivation

2.5.3. Sample 128-bit Key Derivation Initial Values

Password = "clientPass"

Challenge = 10 2d b5 df 08 5d 30 41

Step 1: NtPasswordHash>Password, PasswordHash)

PasswordHash = 44 eb ba 8d 53 12 b8 d6 11 47 44 11 f5 69 89 ae

Step 2: PasswordHashHash = MD4>PasswordHash)

PasswordHashHash = 41 c0 0c 58 4b d2 d9 1c 40 17 a2 a1 2f a5 9f 3f

Step 3: GetStartKey(Challenge, PasswordHashHash, InitialSessionKey)

InitialSessionKey = a8 94 78 50 cf c0 ac ca d1 78 9f b6 2d dc dd b0

Step 4: Copy InitialSessionKey to CurrentSessionKey

CurrentSessionKey = a8 94 78 50 cf c0 ac c1 d1 78 9f b6 2d dc dd b0

Step 5: GetKey(InitialSessionKey, CurrentSessionKey, 16)

CurrentSessionKey = 59 d1 59 bc 09 f7 6f 1d a2 a8 6a 28 ff ec 0b 1e₁₇

- ⊕ Frame 154: 74 bytes on wire (592 bits), 74 bytes captured (592 bits) on interface 0
- ⊕ Ethernet II, Src: LiteonTe_4b:0f:54 (30:10:b3:4b:0f:54), Dst: Netgear_3e:a1:76 (e4:f4:c6:3e:a1:76)
- ⊖ Internet Protocol Version 4, Src: 192.168.2.33 (192.168.2.33), Dst: 137.194.4.241 (137.194.4.241)
 - Version: 4
 - Header Length: 20 bytes
 - ⊕ Differentiated Services Field: 0x00 (DSCP 0x00: Default; ECN: 0x00: Not-ECT (Not ECN-Capable Transport))
 - Total Length: 60
 - Identification: 0x4b9a (19354)
 - ⊕ Flags: 0x00
 - Fragment offset: 0
 - Time to live: 128
 - Protocol: Generic Routing Encapsulation (47)
 - ⊕ Header checksum: 0x9d7c [validation disabled]
 - Source: 192.168.2.33 (192.168.2.33)
 - Destination: 137.194.4.241 (137.194.4.241)
 - [Source GeoIP: Unknown]
 - [Destination GeoIP: Unknown]
- ⊖ Generic Routing Encapsulation (PPP)
 - ⊕ Flags and Version: 0x3081
 - Protocol Type: PPP (0x880b)
 - Payload Length: 24
 - Call ID: 34176
 - Sequence Number: 12
 - Acknowledgment Number: 11
- ⊖ Point-to-Point Protocol
 - Protocol: Internet Protocol Control Protocol (0x8021)
- ⊖ PPP IP Control Protocol
 - Code: Configuration Request (1)
 - Identifier: 8 (0x08)
 - Length: 22
 - ⊖ Options: (18 bytes), IP address, Primary DNS Server IP Address, Secondary DNS Server IP Address
 - ⊖ IP address: 0.0.0.0
 - Type: IP address (3)
 - Length: 6
 - IP Address: 0.0.0.0 (0.0.0.0)
 - ⊕ Primary DNS Server IP Address: 0.0.0.0
 - ⊕ Secondary DNS Server IP Address: 0.0.0.0

IPCP

0000	e4	f4	c6	3e	a1	76	30	10	b3	4b	0f	54	08	00	45	00	v0.	.	K.	T.	E.		
0010	00	3c	4b	9a	00	00	80	2f	9d	7c	c0	a8	02	21	89	c2	.	<	K.	/	!
0020	04	f1	30	81	88	0b	00	18	85	80	00	00	00	00	00	00
0030	00	0b	80	21	01	08	00	16	03	06	00	00	00	00	00	81	06	..	!
0040	00	00	00	00	83	06	00	00	00	00	00	00	00	00	00	00

- ⊕ Frame 160: 74 bytes on wire (592 bits), 74 bytes captured (592 bits) on interface 0
- ⊕ Ethernet II, Src: Netgear_3e:a1:76 (e4:f4:c6:3e:a1:76), Dst: LiteonTe_4b:0f:54 (30:10:b3:4b:0f:54)
- ⊖ Internet Protocol Version 4, Src: 137.194.4.241 (137.194.4.241), Dst: 192.168.2.33 (192.168.2.33)
 - Version: 4
 - Header Length: 20 bytes
 - ⊕ Differentiated Services Field: 0x00 (DSCP 0x00: Default; ECN: 0x00: Not-ECT (Not ECN-Capable Transport))
 - Total Length: 60
 - Identification: 0xac3f (44095)
 - ⊕ Flags: 0x00
 - Fragment offset: 0
 - Time to live: 52
 - Protocol: Generic Routing Encapsulation (47)
 - ⊕ Header checksum: 0x88d7 [validation disabled]
 - Source: 137.194.4.241 (137.194.4.241)
 - Destination: 192.168.2.33 (192.168.2.33)
 - [Source GeoIP: Unknown]
 - [Destination GeoIP: Unknown]
- ⊖ Generic Routing Encapsulation (PPP)
 - ⊕ Flags and Version: 0x3081
 - Protocol Type: PPP (0x880b)
 - Payload Length: 24
 - Call ID: 28781
 - Sequence Number: 15
 - Acknowledgment Number: 12
- ⊖ Point-to-Point Protocol
 - Protocol: Internet Protocol Control Protocol (0x8021)
- ⊖ PPP IP Control Protocol
 - Code: Configuration Nak (3)
 - Identifier: 8 (0x08)
 - Length: 22
 - ⊖ Options: (18 bytes), IP address, Primary DNS Server IP Address, Secondary DNS Server IP Address
 - ⊖ IP address: 137.194.20.176
 - Type: IP address (3)
 - Length: 6
 - IP Address: 137.194.20.176 (137.194.20.176)
 - ⊕ Primary DNS Server IP Address: 137.194.2.17
 - ⊕ Secondary DNS Server IP Address: 255.255.255.255

IPCP

```

0000 30 10 b3 4b 0f 54 e4 f4 c6 3e a1 76 08 00 45 00  0..K.T.. .>.V..E.
0010 00 3c ac 3f 00 00 34 2f 88 d7 89 c2 04 f1 c0 a8  .<.?...4/ .....
0020 02 21 30 81 88 0b 00 18 70 6d 00 00 00 00 00 00  Pa...D...T...Déleco...ParisT...
0030 00 0c 80 21 03 08 00 16 03 06 89 c2 14 b0 81 06  ..!.....
0040 89 c2 02 11 83 06 ff ff ff ff  ....
    
```

- ⊕ Frame 134: 96 bytes on wire (768 bits), 96 bytes captured (768 bits) on interface 0
- ⊕ Ethernet II, Src: Netgear_3e:a1:76 (e4:f4:c6:3e:a1:76), Dst: LiteonTe_4b:0f:54 (30:10:b3:4b:0f:54)
- ⊖ Internet Protocol Version 4, Src: 137.194.4.241 (137.194.4.241), Dst: 192.168.2.33 (192.168.2.33)
 - Version: 4
 - Header Length: 20 bytes
 - ⊕ Differentiated Services Field: 0x00 (DSCP 0x00: Default; ECN: 0x00: Not-ECT (Not ECN-Capable Transport))
 - Total Length: 82
 - Identification: 0xac34 (44084)
 - ⊕ Flags: 0x00
 - Fragment offset: 0
 - Time to live: 52
 - Protocol: Generic Routing Encapsulation (47)
 - ⊕ Header checksum: 0x88cc [validation disabled]
 - Source: 137.194.4.241 (137.194.4.241)
 - Destination: 192.168.2.33 (192.168.2.33)
 - [Source GeoIP: Unknown]
 - [Destination GeoIP: Unknown]
- ⊖ Generic Routing Encapsulation (PPP)
 - ⊕ Flags and Version: 0x3001
 - Protocol Type: PPP (0x880b)
 - Key: 0x0032706d
 - Sequence Number: 4
- ⊖ Point-to-Point Protocol
 - Address: 0xff
 - Control: 0x03
 - Protocol: Link Control Protocol (0xc021)
- ⊖ PPP Link Control Protocol
 - Code: Identification (12)
 - Identifier: 1 (0x01)
 - Length: 46
 - Magic Number: 0x8cd0d09d
 - Message: user-ppp 3.4.2 (built COMPILATIONDATE)

Authentication

0000	30 10 b3 4b 0f 54 e4 f4 c6 3e a1 76 08 00 45 00	O..K.T.. .>.V..E.
0010	00 52 ac 34 00 00 34 2f 88 cc 89 c2 04 f1 c0 a8	.R.4..4/
0020	02 21 30 01 88 0b 00 32 70 6d 00 00 00 04 ff 03	..!0....2 pm.....
0030	c0 21 0c 01 00 2e 8c d0 d0 9d 75 73 65 72 2d 70	!..... ..user-p
0040	70 70 20 33 2e 34 2e 32 20 28 62 75 69 6c 74 20	pp 3.4.2 (built
0050	43 4f 4d 50 49 4c 41 54 49 4f 4e 44 41 54 49 29	COMPILATIONDATE)

- ⊕ Frame 135: 69 bytes on wire (552 bits), 69 bytes captured (552 bits) on interface 0
- ⊕ Ethernet II, Src: Netgear_3e:a1:76 (e4:f4:c6:3e:a1:76), Dst: LiteonTe_4b:0f:54 (30:10:b3:4b:0f:54)
- ⊖ Internet Protocol Version 4, Src: 137.194.4.241 (137.194.4.241), Dst: 192.168.2.33 (192.168.2.33)
 - Version: 4
 - Header Length: 20 bytes
 - ⊕ Differentiated Services Field: 0x00 (DSCP 0x00: Default; ECN: 0x00: Not-ECT (Not ECN-Capable Transport))
 - Total Length: 55
 - Identification: 0xac35 (44085)
 - ⊕ Flags: 0x00
 - Fragment offset: 0
 - Time to live: 52
 - Protocol: Generic Routing Encapsulation (47)
 - ⊕ Header checksum: 0x88e6 [validation disabled]
 - Source: 137.194.4.241 (137.194.4.241)
 - Destination: 192.168.2.33 (192.168.2.33)
 - [Source GeoIP: Unknown]
 - [Destination GeoIP: Unknown]
- ⊖ Generic Routing Encapsulation (PPP)
 - ⊕ Flags and Version: 0x3001
 - Protocol Type: PPP (0x880b)
 - Key: 0x0017706d
 - Sequence Number: 5
- ⊖ Point-to-Point Protocol
 - Protocol: Challenge Handshake Authentication Protocol (0xc223)
- ⊖ PPP Challenge Handshake Authentication Protocol
 - Code: Challenge (1)
 - Identifier: 1
 - Length: 21
 - ⊖ Data
 - Value Size: 16
 - Value: c14785ae0cab8be3e6aab5b50bab9676

Authentication

0000	30 10 b3 4b 0f 54 e4 f4 c6 3e a1 76 08 00 45 00	0..K.T.. .>.v..E.
0010	00 37 ac 35 00 00 34 2f 88 e6 89 c2 04 f1 c0 a8	.7.5..4/
0020	02 21 30 01 88 0b 00 17 70 6d 00 00 00 05 c2 23	..!0..... pm....#
0030	01 01 00 15 10 c1 47G.
0040	-- -- . -- 76v

- ⊕ Frame 140: 107 bytes on wire (856 bits), 107 bytes captured (856 bits) on interface 0
- ⊕ Ethernet II, Src: LiteonTe_4b:0f:54 (30:10:b3:4b:0f:54), Dst: Netgear_3e:a1:76 (e4:f4:c6:3e:a1:76)
- ⊖ Internet Protocol Version 4, Src: 192.168.2.33 (192.168.2.33), Dst: 137.194.4.241 (137.194.4.241)
 - Version: 4
 - Header Length: 20 bytes
 - ⊕ Differentiated Services Field: 0x00 (DSCP 0x00: Default; ECN: 0x00: Not-ECT (Not ECN-Capable Transport))
 - Total Length: 93
 - Identification: 0x4b92 (19346)
 - ⊕ Flags: 0x00
 - Fragment offset: 0
 - Time to live: 128
 - Protocol: Generic Routing Encapsulation (47)
 - ⊕ Header checksum: 0x9d63 [validation disabled]
 - Source: 192.168.2.33 (192.168.2.33)
 - Destination: 137.194.4.241 (137.194.4.241)
 - [Source GeoIP: Unknown]
 - [Destination GeoIP: Unknown]
- ⊖ Generic Routing Encapsulation (PPP)
 - ⊕ Flags and Version: 0x3001
 - Protocol Type: PPP (0x880b)
 - Key: 0x003d8580
 - Sequence Number: 6
- ⊖ Point-to-Point Protocol
 - Protocol: Challenge Handshake Authentication Protocol (0xc223)
- ⊖ PPP Challenge Handshake Authentication Protocol
 - Code: Response (2)
 - Identifier: 1
 - Length: 59
 - ⊖ Data
 - Value Size: 49
 - Value: eb1825d756ac122b2f46d6668d2dc6fc00000000000000000...
 - Name: urien

Authentication

```

0000 e4 f4 c6 3e a1 76 30 10 b3 4b 0f 54 08 00 45 00  ...>.v0. .K.T..E.
0010 00 5d 4b 92 00 00 80 2f 9d 63 c0 a8 02 21 89 c2  .]K..../.c...!..
0020 04 f1 30 01 88 0b 00 3d 85 80 00 00 00 06 c2 23  ..0....= .....#.
0030 02 01 00 00 3b 31 eb 18 25 d7 56 ac 12 2b 2f 46 d6  ...;1..% .V..+/F.
0040 66 8d 2d c6 fc 00 00 00 00 00 00 00 00 10 84 6d  f.-..... .....m
0050 48 7a 01 0c c7 99 8e 8b ae 36 8e 46 48 0d 98 ba  HZ,..... .6.FH...
0060 6d e8 60 0b 48 00 75 72 69 65 6e                m.`.H.ur ien
    
```

- 142 20.254263000 137.194.4.241 192.168.2.33 PPP CHAP 98 Success (MESSAGE='S=B7750331D47749F15F8F72A8844BCE28A499527D')
- ⊕ Frame 142: 98 bytes on wire (784 bits), 98 bytes captured (784 bits) on interface 0
- ⊕ Ethernet II, Src: Netgear_3e:a1:76 (e4:f4:c6:3e:a1:76), Dst: LiteonTe_4b:0f:54 (30:10:b3:4b:0f:54)
- ⊖ Internet Protocol Version 4, Src: 137.194.4.241 (137.194.4.241), Dst: 192.168.2.33 (192.168.2.33)
 - Version: 4
 - Header Length: 20 bytes
 - ⊕ Differentiated Services Field: 0x00 (DSCP 0x00: Default; ECN: 0x00: Not-ECT (Not ECN-Capable Transport))
 - Total Length: 84
 - Identification: 0xac36 (44086)
 - ⊕ Flags: 0x00
 - Fragment offset: 0
 - Time to live: 52
 - Protocol: Generic Routing Encapsulation (47)
 - ⊕ Header checksum: 0x88c8 [validation disabled]
 - Source: 137.194.4.241 (137.194.4.241)
 - Destination: 192.168.2.33 (192.168.2.33)
 - [Source GeoIP: Unknown]
 - [Destination GeoIP: Unknown]
- ⊖ Generic Routing Encapsulation (PPP)
 - ⊕ Flags and Version: 0x3081
 - Protocol Type: PPP (0x880b)
 - Payload Length: 48
 - Call ID: 28781
 - Sequence Number: 6
 - Acknowledgment Number: 6
- ⊖ Point-to-Point Protocol
 - Protocol: Challenge Handshake Authentication Protocol (0xc223)
- ⊖ PPP Challenge Handshake Authentication Protocol
 - Code: Success (3)
 - Identifier: 1
 - Length: 46
 - Message: S=B7750331D47749F15F8F72A8844BCE28A499527D

Authentication

```

0000  30 10 b3 4b 0f 54 e4 f4 c6 3e a1 76 08 00 45 00  0..K.T.. .>.v..E.
0010  00 54 ac 36 00 00 34 2f 88 c8 89 c2 04 f1 c0 a8  .T.6..4/ .....
0020  02 21 30 81 88 0b 00 30 70 6d 00 00 00 06 00 00  .!0....0 pm.....
0030  00 06 c2 23 03 01 00 2e 53 3d 42 37 37 35 30 33  ..#. .... S=B77503
0040  33 31 44 34 37 37 34 39 46 31 35 46 38 46 37 32  31D47749 F15F8F72
0050  41 38 38 34 34 42 43 45 32 38 41 34 39 39 35 32  A8844BCE 28A49952
0060  37 44                                     7D

```


Transport GRE Chiffré

- ⊕ Ethernet II, Src: LiteonTe_4b:0f:54 (30:10:b3:4b:0f:54), Dst: Netgear_3e:a1:76 (e4:f4:c6:3e:a1:76)
- ⊖ Internet Protocol Version 4, Src: 192.168.2.33 (192.168.2.33), Dst: 137.194.4.241 (137.194.4.241)
 - Version: 4
 - Header Length: 20 bytes
 - ⊕ Differentiated Services Field: 0x00 (DSCP 0x00: Default; ECN: 0x00: Not-ECT (Not ECN-Capable Transport))
 - Total Length: 92
 - Identification: 0x4ba2 (19362)
 - ⊕ Flags: 0x00
 - Fragment offset: 0
 - Time to live: 128
- Protocol: Generic Routing Encapsulation (47)
- ⊖ Header checksum: 0x9d54 [validation disabled]
 - [Good: False]
 - [Bad: False]
 - Source: 192.168.2.33 (192.168.2.33)
 - Destination: 137.194.4.241 (137.194.4.241)
 - [Source GeoIP: Unknown]
 - [Destination GeoIP: Unknown]
- ⊖ Generic Routing Encapsulation (PPP)
- ⊖ Flags and version: 0x3001
 - 0... .. = Checksum Bit: No
 - .0.. = Routing Bit: No
 - ..1. = Key Bit: Yes
 - ...1 = Sequence Number Bit: Yes
 - 0... = Strict Source Route Bit: No
 -000 = Recursion control: 0
 - 0000 0... = Flags (Reserved): 0
 -001 = version: Enhanced GRE (1)
- Protocol Type: PPP (0x880b)
- Key: 0x003c8580
- Sequence Number: 17

⊖ Point-to-Point Protocol

```
0010 00 5c 4b a2 00 00 80 2f 9d 54 c0 a8 02 21 89 c2 .\K.... .T...!..
0020 04 f1 30 01 88 0b 00 3c 85 80 00 00 00 11 fd 90 ..0....< .....
0030 01 68 7c 18 07 f0 51 3b 02 71 fb 43 6a d9 7b 6e .h|...Q; .q.Cj.{n
0040 83 50 20 62 f4 67 b2 77 73 c3 33 e3 55 17 21 f7 .P b.g.w s.3.U.!
0050 ed 2e ef 83 a0 a7 a3 d6 13 17 37 25 83 c3 05 ec .com.PariTech..%...
0060 f1 5f c9 b0 c4 cb a4 d9 08 60 .....
```


Au sujet de EAP

Extensible Authentication Protocol

EAP, what else ?

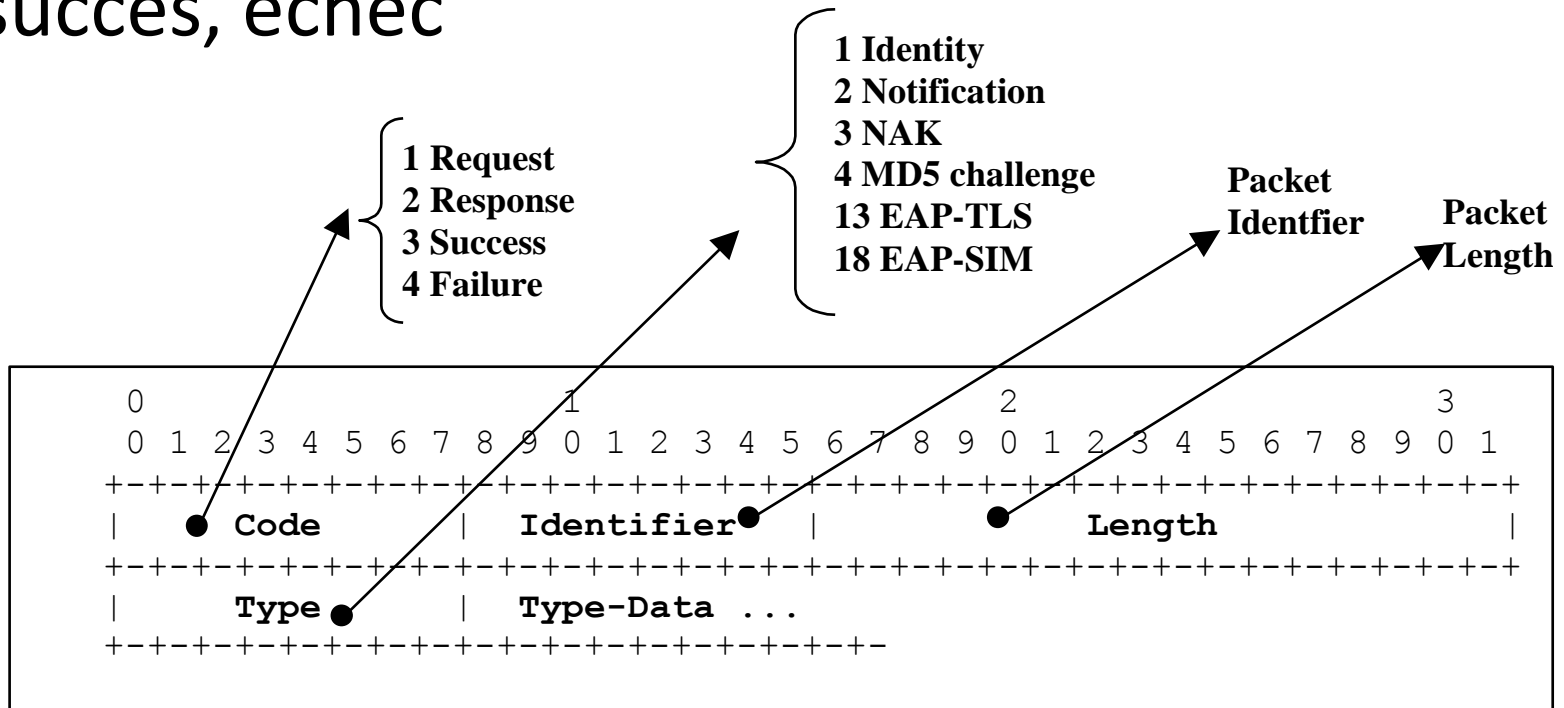
- The Extensible Authentication Protocol (EAP) was introduced in 1999, in order to define a flexible authentication framework.
- EAP, RFC 3748, "Extensible Authentication Protocol, (EAP)", June 2004.
 - EAP-TLS, RFC 2716, "PPP EAP TLS Authentication Protocol", 1999.
 - EAP-SIM, RFC 4186, " Extensible Authentication Protocol Method for Global System for Mobile Communications (GSM) Subscriber Identity Modules (EAP-SIM) ", 2006
 - EAP-AKA, RFC 4187, " Extensible Authentication Protocol Method for 3rd Generation Authentication and Key Agreement (EAP-AKA) ", 2006

EAP Applications

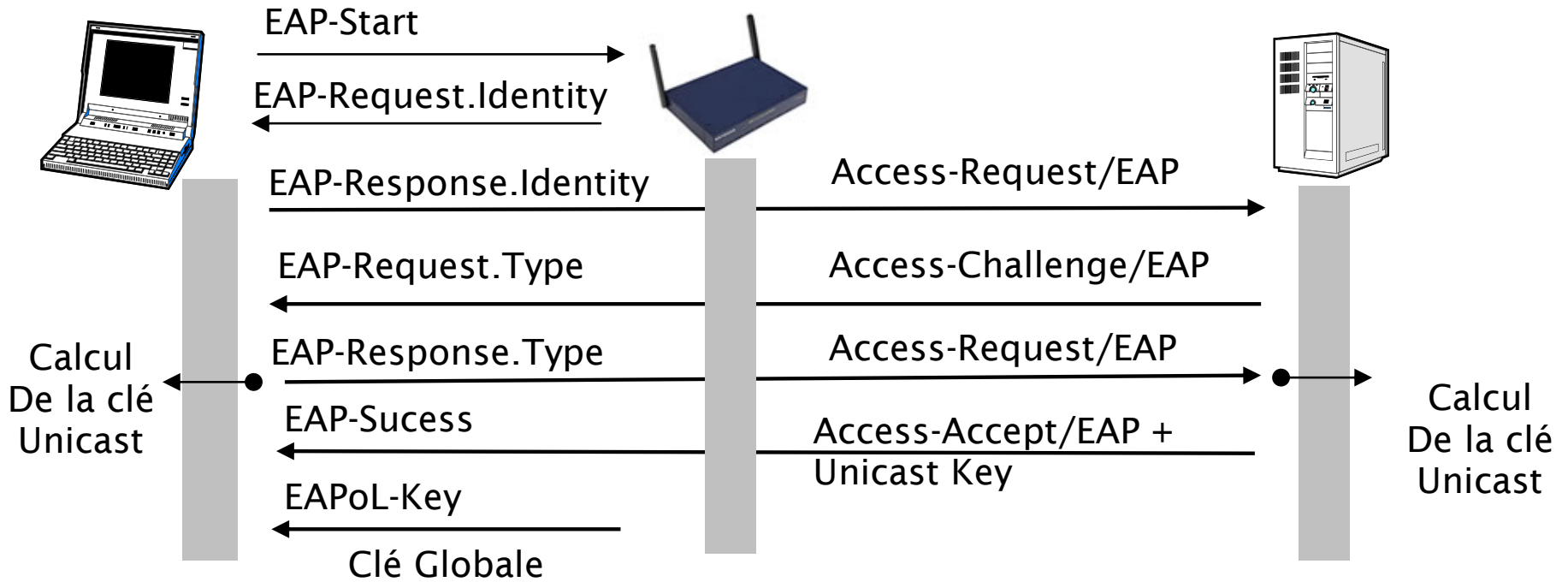
- Wireless LAN
 - Wi-Fi, IEEE 802.1x, 2001
 - WiMAX mobile, IEEE 802.16e , PKM-EAP, 2006
- Wired LANs
 - ETHERNET, IEEE 802.3
 - PPP, RFC 1661, “The Point-to-Point Protocol (PPP)”, 1994
- VPN (Virtual Private Network) technologies
 - PPTP, Point-to-Point Tunneling Protocol (PPTP), RFC 2637
 - L2TP, Layer Two Tunneling Protocol (L2TP), RFC 2661
 - IKEv2, RFC 4306, "Internet Key Exchange (IKEv2) Protocol“, 2005
- Authentication Server
 - RADIUS, RFC 3559, “RADIUS (Remote Authentication Dial In User Service) Support For Extensible Authentication Protocol (EAP)”, 2003
 - DIAMETER, RFC 4072, "Diameter Extensible Authentication Protocol Application“, 2005
- Voice Over IP
 - UMA, Unlicensed Mobile Access, <http://www.umatechnology.org>

Le protocole EAP.

- EAP est conçu pour transporter des scénarios d'authentification.
- Quatre types de messages, requêtes, réponses, succès, échec

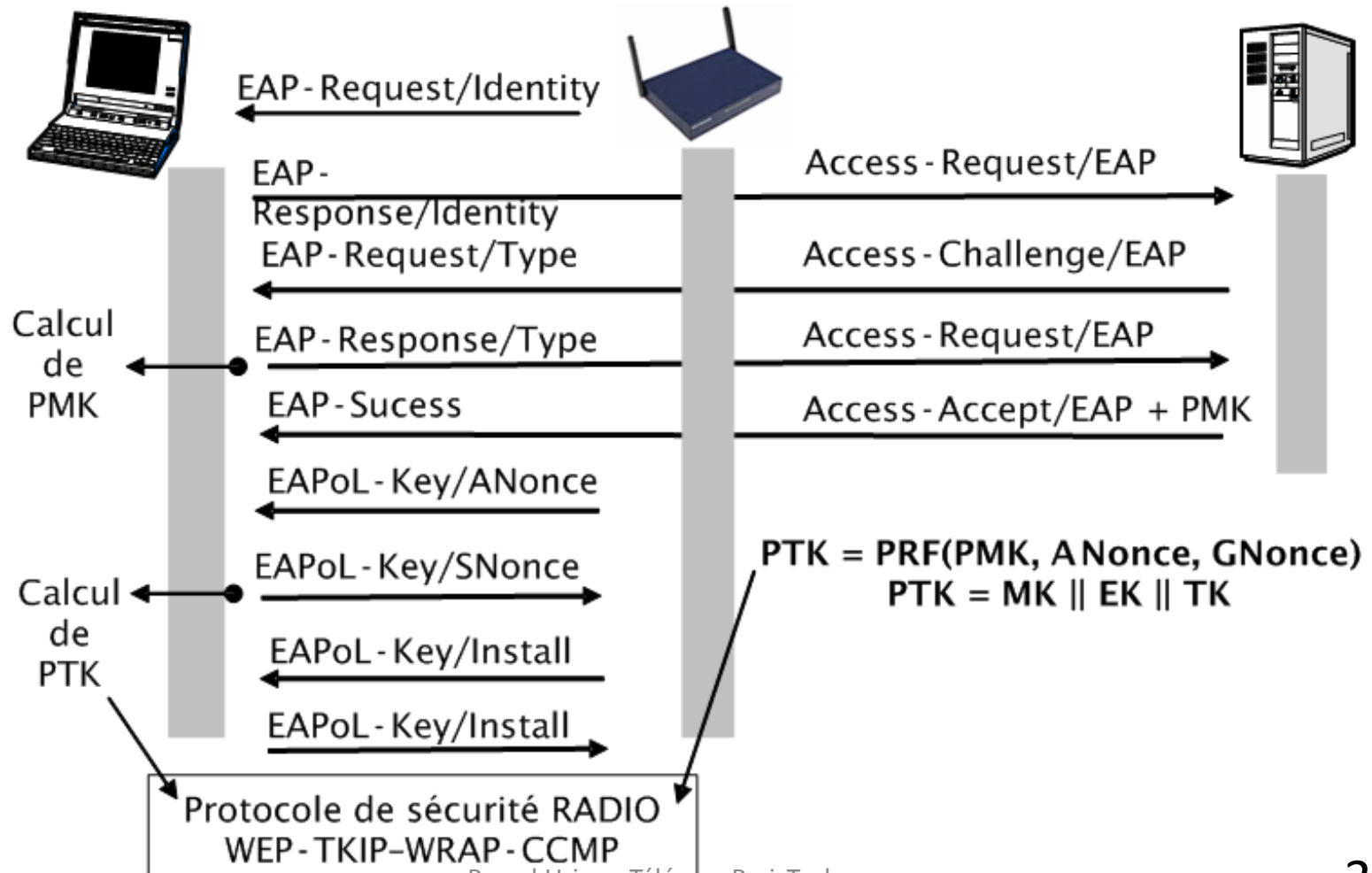


IEEE 802.1x



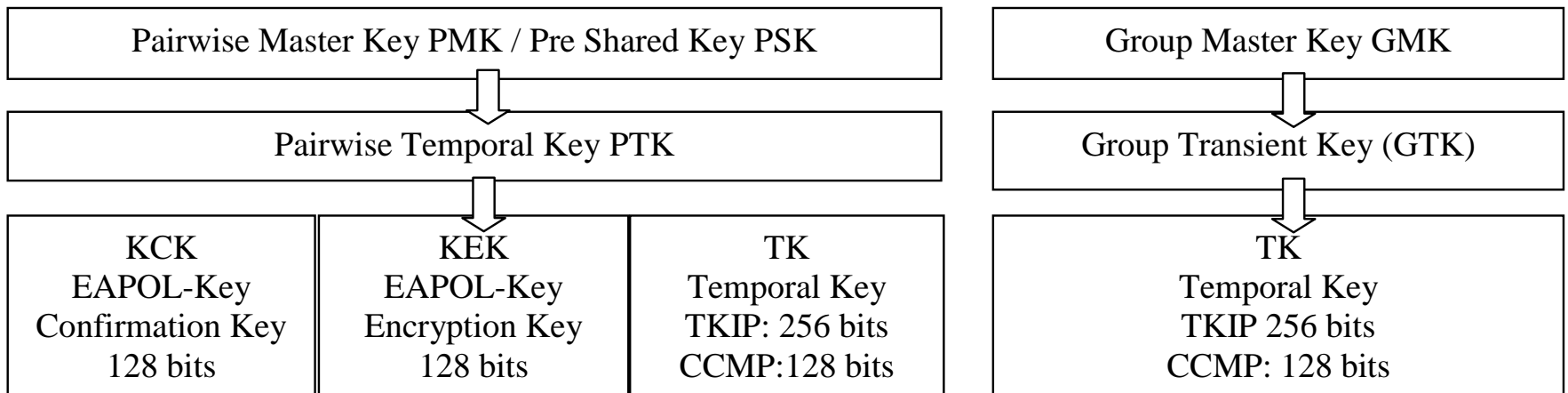
IEEE 802.11i : Distribution des clés

- Four ways handshake (PTK).
- Two ways handshake (GTK).



802.11 i: Hiérarchie des clés

- PMK est déduite de l'authentification EAP.
- PSK est une alternative à PMK.
- GMK est une clé maître de groupe.



SSH

SSH

- La première version de SSH (SSH-1) a été conçue par Tatu Ylönen, à Espoo, en Finlande en 1995.
- La version suivante a été nommée SSH-2. Le groupe de recherche de l'IETF « secsh » a défini en janvier 2006 le standard Internet SSH-2
 - RFC 4251, Secure Shell (SSH) Protocol Architecture
 - RFC 4253, The Secure Shell (SSH) Transport Layer Protocol
 - RFC 4252, The Secure Shell (SSH) Authentication Protocol
 - RFC 4254, The Secure Shell (SSH) Connection Protocol

RFC 4251: Protocol Architecture

- Transport Layer Protocol
 - Réalise l'authentification du serveur, la confidentialité et l'intégrité des messages SSH
- User Authentication Protocol
 - Réalise l'authentification du client
 - Les messages sont acheminés via le canal sécurisé mis en place par le transport Layer Protocol
- Connection Protocol
 - Multiplexe plusieurs canaux logiques dans le tunnel sécurisé.
 - Les messages sont transportés par le User Authentication Protocol

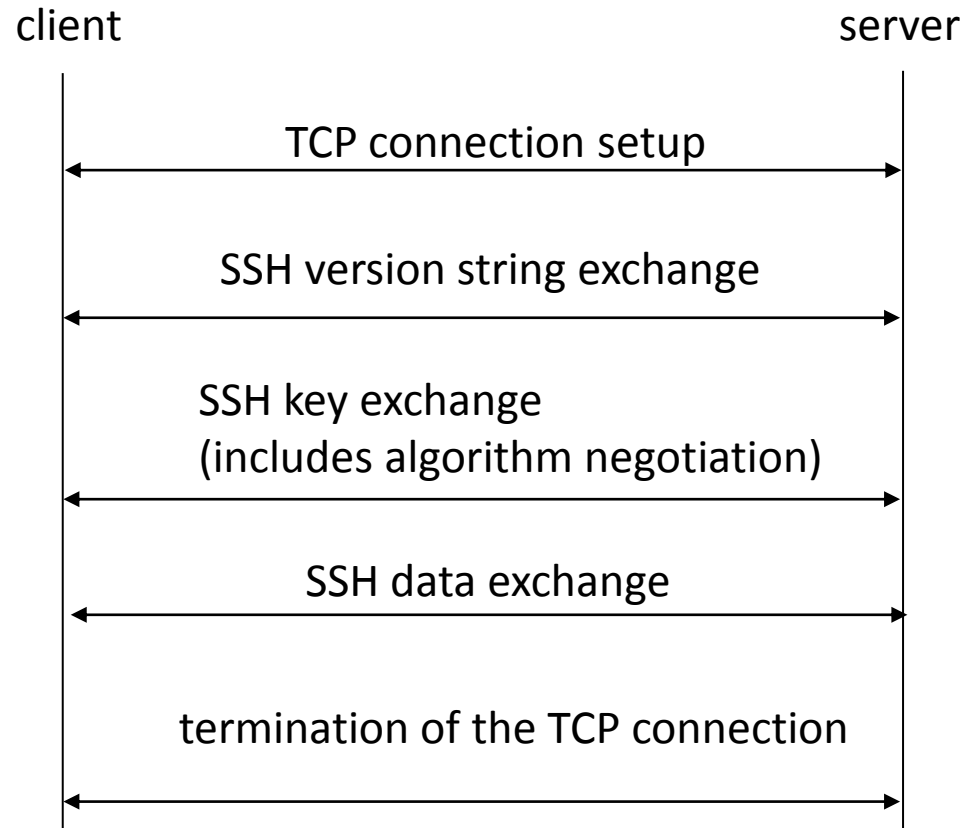
RFC 4251: Type de données

- byte: un octet
- boolean: un octet
- uint32: 4 octets (unsigned integer)
- uint64: 8 octets (unsigned integer)
- string: uint32 (longueur) [caractères ASCII]
- mpint: signed integer, encodé comme un string
- name-list: encodé comme un string, comportant une liste de noms séparés par une virgule (0x2c)

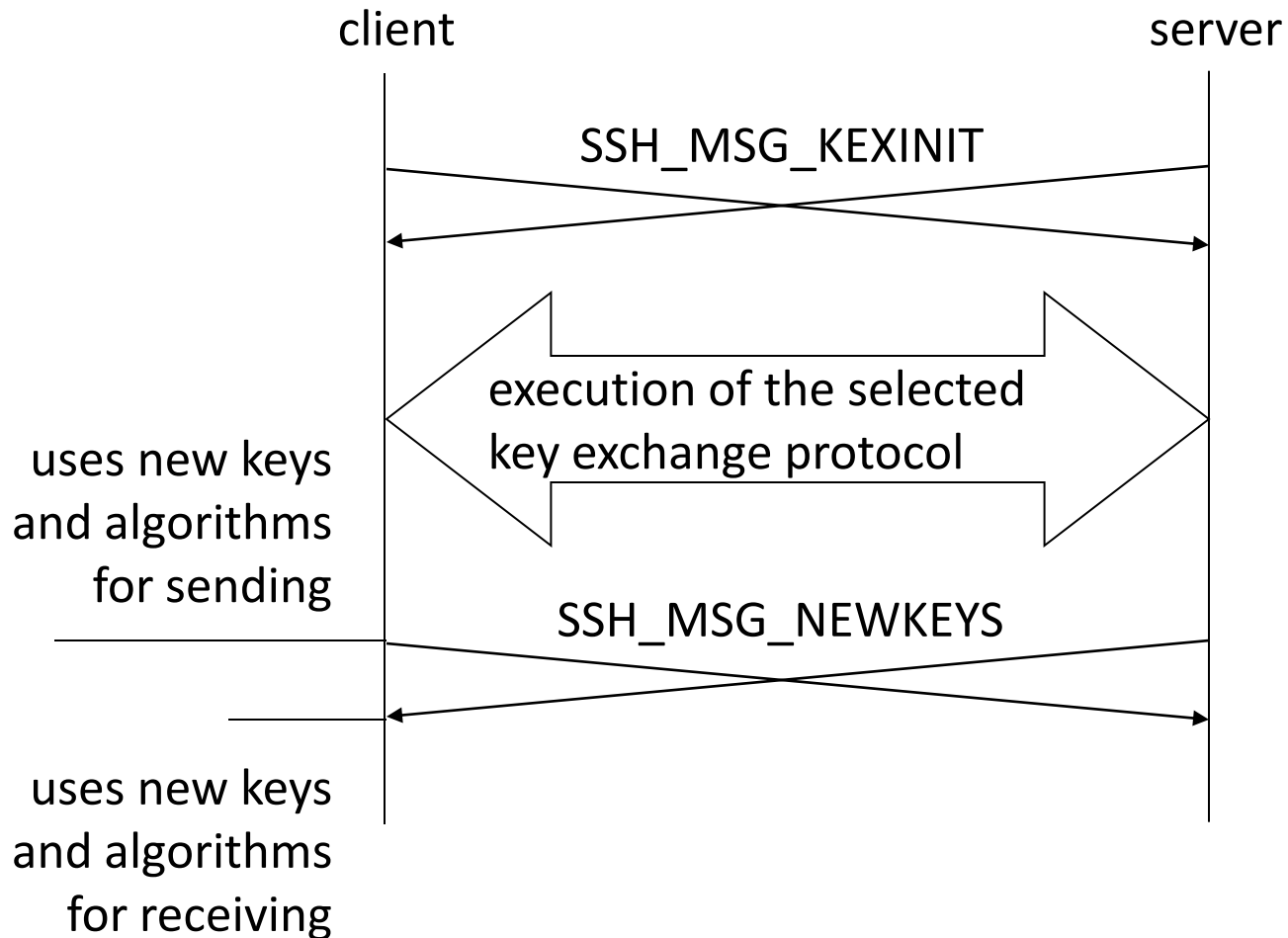
Structure d'un paquet TLP (Transport Layer Protocol) Chiffrement

- uint32 packet_length
 - sans le champ longueur et le MAC
- byte padding_length
- byte[n1] payload;
 - $n1 = \text{packet_length} - \text{padding_length} - 1$
 - Le premier octet du payload est le MESSAGE NUMBER
- byte[n2] random padding;
 - $n2 = \text{padding_length}$
- byte[m] mac (Message Authentication Code - MAC)
 - $m = \text{mac_length}$
 - $\text{MAC}(\text{key}, \text{sequence_number} || \text{unencrypted_packet})$

SSH TLP - RFC 4253



Key Exchange RFC 4253



Signature du Serveur

- C generates a random number x ($1 < x < q$) and computes
 - $e = g^x \text{ mod } p$. C sends e to S.
- S generates a random number y ($0 < y < q$) and computes
 - $f = g^y \text{ mod } p$. S receives e . It computes $K = e^y \text{ mod } p$,
 - $H = \text{hash}(V_C || V_S || I_C || I_S || K_S || e || f || K)$
 - And signature s on H with its private host key

Rappel: Signature DSA

- La clé DSA publique comporte 4 paramètres y, p, q, g
 - q un premier premier de N bits
 - p un nombre premier de L bits tel que $p-1$ soit un multiple de q , $p = 1 + aq$
 - Exemple de couples (L, N) : $(1,024, 160)$, $(2,048, 224)$, $(2,048, 256)$, $(3,072, 256)$
 - Clé publique $y = g^x \text{ mod } p$
 - clé privée x tel que; $0 < x < q$
- La signature DSA est le couple (r, s)
 - On choisit un nombre aléatoire k
 - tel que $0 < k < q$
 - On calcule $r = (g^k \text{ mod } p) \text{ mod } q$, r doit être non nul
 - $s = k^{-1} (H(m) + x.r) \text{ mod } q$, s doit être non nul
- DSA-Sig-Value ::= SEQUENCE { r INTEGER, s INTEGER }

Signature du Serveur

Filter: ssh Expression... Clear Apply Save

No.	Time	Source	Destination	Protocol	Length	Info
753	223.304729000	192.168.2.60	192.168.2.33	SSHv2	93	Server: Protocol (SSH-2.0-OpenSSH_6.0p1 Debian-4+deb7u2)
754	223.305058000	192.168.2.33	192.168.2.60	SSHv2	82	Client: Protocol (SSH-2.0-PuTTY_Release_0.63)
755	223.305244000	192.168.2.33	192.168.2.60	SSHv2	726	Client: Key Exchange Init
758	223.355998000	192.168.2.60	192.168.2.33	SSHv2	1038	Server: Key Exchange Init
759	223.356317000	192.168.2.33	192.168.2.60	SSHv2	70	Client: Diffie-Hellman Group Exchange Request (old)
760	223.391252000	192.168.2.60	192.168.2.33	SSHv2	590	Server: Diffie-Hellman Group Exchange Group
762	223.530132000	192.168.2.33	192.168.2.60	SSHv2	582	Client: Diffie-Hellman Group Exchange Init
765	224.130177000	192.168.2.60	192.168.2.33	SSHv2	1158	Server: Diffie-Hellman Group Exchange Reply, New Keys

```
SSH Protocol
  SSH Version 2 (encryption:aes256-ctr mac:hmac-sha2-256 compression:none)
    Packet Length: 1084
    Padding Length: 8
    Key Exchange
      Message Code: Diffie-Hellman Group Exchange Reply (33)
      KEX DH host key length: 279
      KEX DH host key: 000000077373682d727361000000030100010000010100c4...
      Multi Precision Integer Length: 512
      DH server f: 36482005afb07aaffbfa8d632479b047fe2908d893de629...
      KEX DH H signature length: 271
      KEX DH H signature: 000000077373682d727361000001004e8debcf1c26c4f962...
      Payload: <MISSING>
      Padding String: 000000000000000000
    SSH Version 2 (encryption:aes256-ctr mac:hmac-sha2-256 compression:none)
      Packet Length: 12
      Padding Length: 10
      Key Exchange
        Message Code: New Keys (21)
        Payload: <MISSING>
        Padding String: 0000000000000000000000
```

```
0040 00 00 00 07 73 73 68 2d 72 73 61 00 00 00 03 01 ...ssh- rsa....
0050 00 01 00 00 01 01 00 c4 55 09 a9 c2 38 9e 0d e2 ..... u...8...
0060 1e 6d 45 64 01 ca ed 20 c1 32 af 0b 85 b5 07 59 mEd... 2...Y
0070 c4 06 fe f6 18 dc 61 5f 5c 7a 97 93 67 89 8e f9 ...a_ (z)g...
0080 16 3d 5b b3 64 01 e3 fa f1 1d 4f e7 e5 19 d5 ea .=[.d... ..o....
0090 0b 78 22 2c 1e 6e 18 65 51 6a 26 ca 2c dc 06 2e x p o 016
```

Tunnel SSH

Filter: ssh Expression... Clear Apply Save

Source	Destination	Protocol	Length	Info
192.168.2.60	192.168.2.33	SSHv2	93	Server: Protocol (SSH-2.0-openssh_6.0p1 Debian-4+deb7u2)
192.168.2.33	192.168.2.60	SSHv2	82	Client: Protocol (SSH-2.0-PuTTY_Release_0.63)
192.168.2.33	192.168.2.60	SSHv2	726	Client: Key Exchange Init
192.168.2.60	192.168.2.33	SSHv2	1038	Server: Key Exchange Init
192.168.2.33	192.168.2.60	SSHv2	70	Client: Diffie-Hellman Group Exchange Request (old)
192.168.2.60	192.168.2.33	SSHv2	590	Server: Diffie-Hellman Group Exchange Group
192.168.2.33	192.168.2.60	SSHv2	582	Client: Diffie-Hellman Group Exchange Init
192.168.2.60	192.168.2.33	SSHv2	1158	Server: Diffie-Hellman Group Exchange Reply, New Keys
192.168.2.33	192.168.2.60	SSHv2	70	Client: New Keys
192.168.2.33	192.168.2.60	SSHv2	118	Client: Encrypted packet (len=64)

Frame 117: 118 bytes on wire (944 bits), 118 bytes captured (944 bits) on interface 0

Ethernet II, Src: LiteonTe_4b:0f:54 (30:10:b3:4b:0f:54), Dst: EdimaxTe_33:ca:99 (74:da:38:33:ca:99)

Internet Protocol Version 4, Src: 192.168.2.33 (192.168.2.33), Dst: 192.168.2.60 (192.168.2.60)

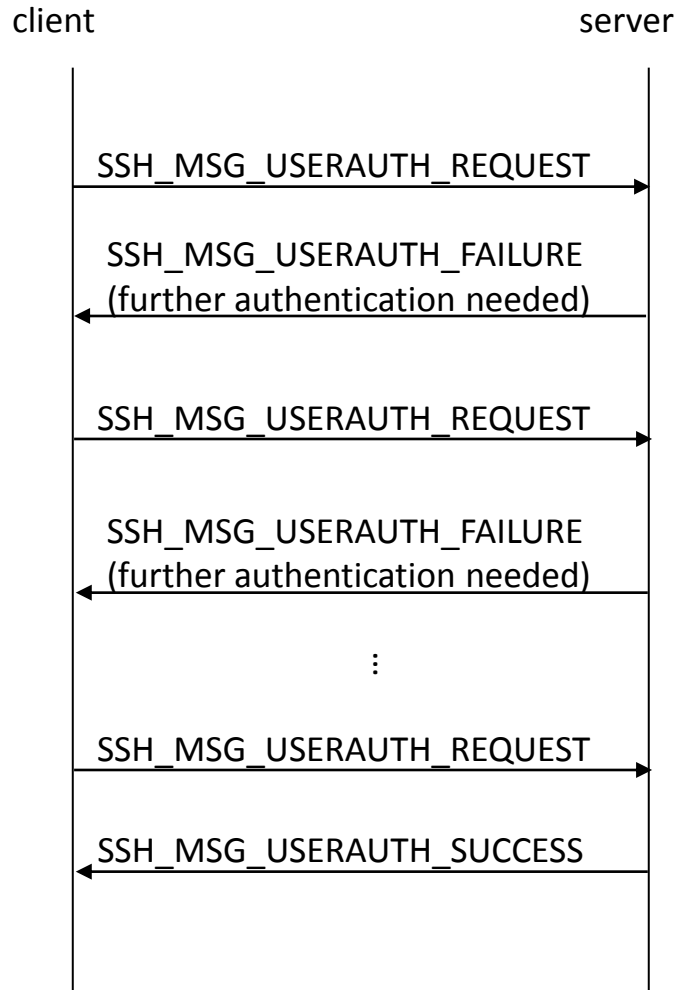
Transmission Control Protocol, Src Port: 51489 (51489), Dst Port: 22 (22), Seq: 1261, Ack: 2664, Len: 64

SSH Protocol

- SSH Version 2 (encryption:aes256-ctr mac:hmac-sha2-256 compression:none)
 - Packet Length (encrypted): 436cb0c2
 - Encrypted Packet: 3deab6229bc713a8ad68f37cb4725911f5fe34f47e20212d...
 - MAC: a3471de6b7e75d91c3e0fd6a4f8e4c87bb7c33d3a3cb3267...

```
0000 74 da 38 33 ca 99 30 10 b3 4b 0f 54 08 00 45 00  t.83..0. .K.T..E.
0010 00 68 10 88 40 00 80 06 64 5a c0 a8 02 21 c0 a8  .h..@... dZ...!..
0020 02 3c c9 21 00 16 94 e9 66 a7 32 ca 3f f5 50 18  .<.!.... f.2.?..P.
0030 10 08 d2 35 00 00 43 6c b0 c2 3d ea b6 22 9b c7  ...5..c| ..="..
0040 13 a8 ad 68 f3 7c b4 72 59 11 f5 fe 34 f4 7e 20  ...h.|.r Y...4.~
0050 21 2d 24 f9 f5 63 a3 47 1d e6 b7 e7 5d 91 c3 e0  !-$.c.G ....]...
0060 fd 6a 4f 8e 4c 87 bb 7c 33 d3 a3 cb 32 67 2d b6  .jo.L..| 3...2g-.
0070 dd 2c e0 66 00 91
```

RFC 4252 User Authentication Protocol



- Trois méthodes
 - Password
 - Echange du mot de passe
 - PublicKey
 - Signature du client basée sur un mécanisme asymétrique (DSS) à l'aide d'une clé privée du client (certificat client)
 - Host Based
 - Signature basée sur un mécanisme asymétrique (DSS) à l'aide d'une clé privée du host (certificat host)

RFC 4254 Connection Protocol

- Gestion de canaux logiques identifiés par un type
 - OPEN, CLOSE
 - REQUEST, RESPONSE
 - Gestion de (sous) type (shell, X11, ...) dans un canal
- Ouverture de sessions interactives, exécution distante d'un programme
 - Shell, X11
- TCP/IP Port Forwarding
 - Redirection de canaux logiques SSH vers des ports TCP/IP.

IPSEC

IPSEC: AH et ESP

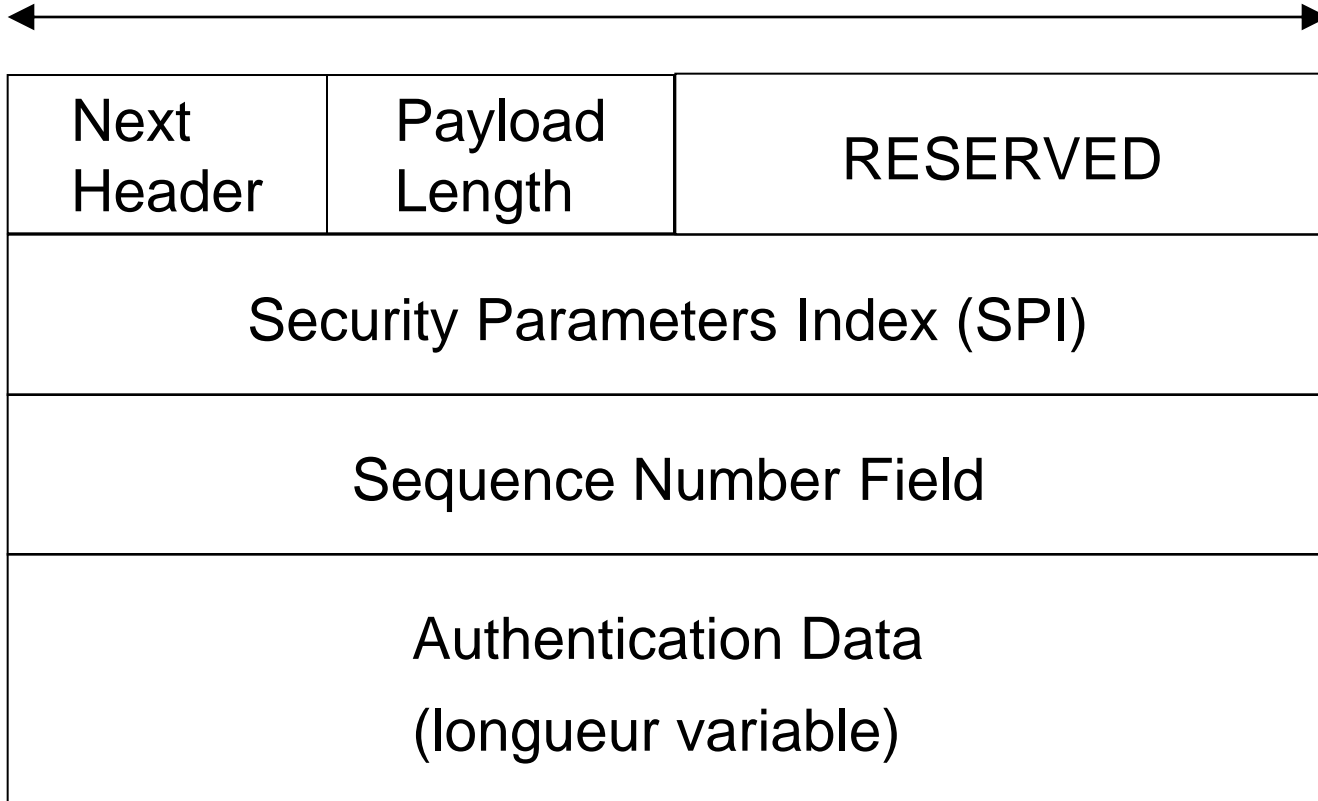
- Deux en têtes spécifiques sont utilisés, AH (IP Authentication Header) et ESP (IP Encapsulating Security Payload).
- AH garantit l'intégrité et l'authentification des datagrammes IP, mais n'assure pas la confidentialité des données.
- ESP est utilisé pour fournir l'intégrité, l'authentification et la confidentialité des datagrammes IP.

Security Association

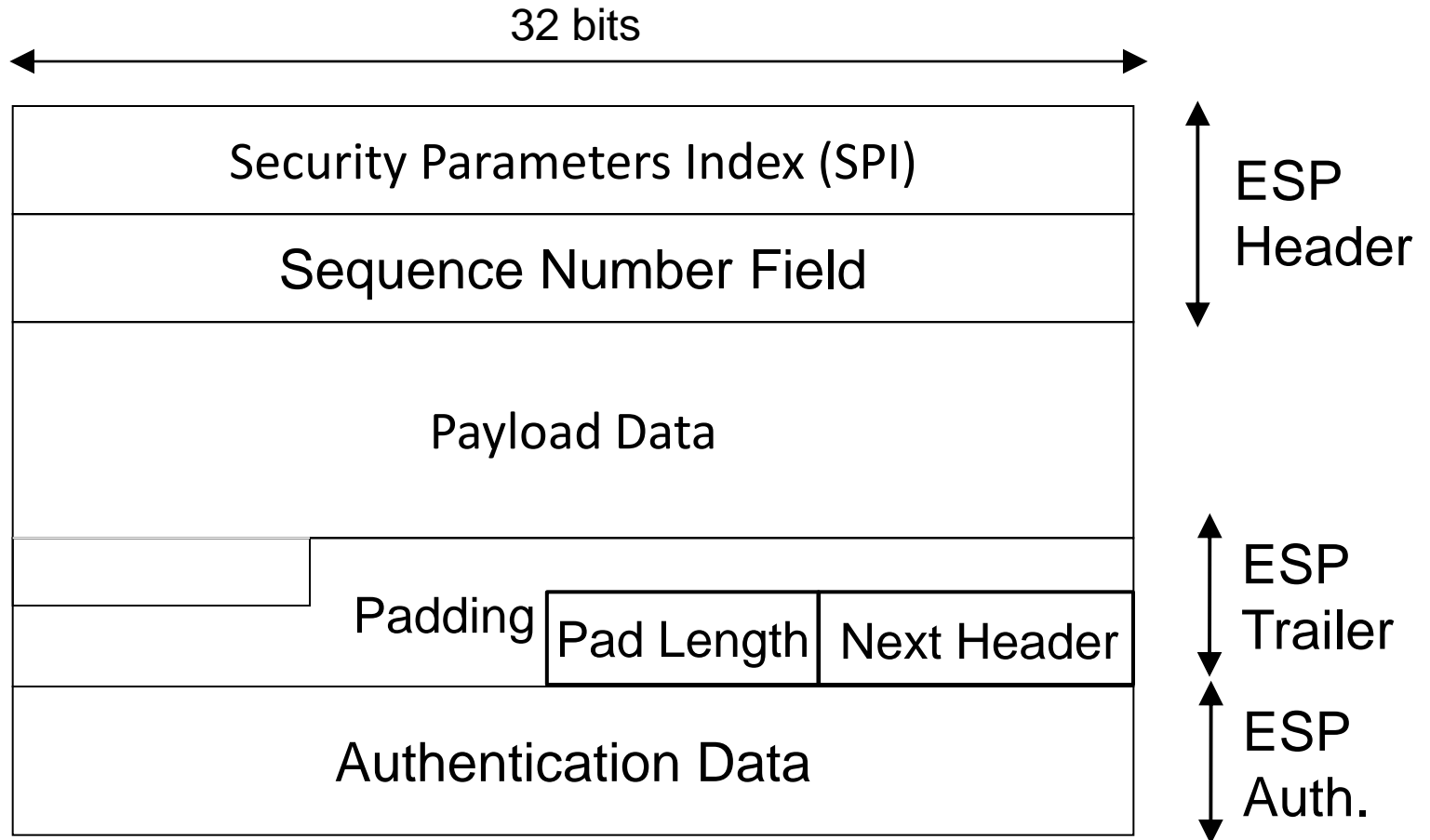
- Ce concept est fondamental à la fois pour AH et ESP. La combinaison d'un SPI (Security Parameter Index) et d'une adresse de destination identifie de manière unique un SA particulier.
- Une association de sécurité inclue usuellement les paramètres suivant :
 - Un algorithme d'authentification (utilisé pour AH).
 - La (les) clé(s) utilisée(s) par l'algorithme d'authentification.
 - L'algorithme de chiffrement utilisé par ESP.
 - La (les) clé(s) utilisée(s) par l'algorithme de chiffrement.
 - Divers paramètres utiles à l'algorithme de chiffrement.
 - L'algorithme d'authentification utilisé avec ESP (s'il existe)
 - Les clés utilisées avec l'algorithme d'authentification d'ESP (si nécessaire).
 - La durée de vie de la clé.
 - La durée de vie du SA.
 - La ou les adresses de source du SA
 - Le niveau de sécurité (Secret, non classé ...)
- Le système hôte qui émet l'information sélectionne un SA en fonction du destinataire. L'association de sécurité est de manière générale mono directionnelle.

Authentication Header

32 bits

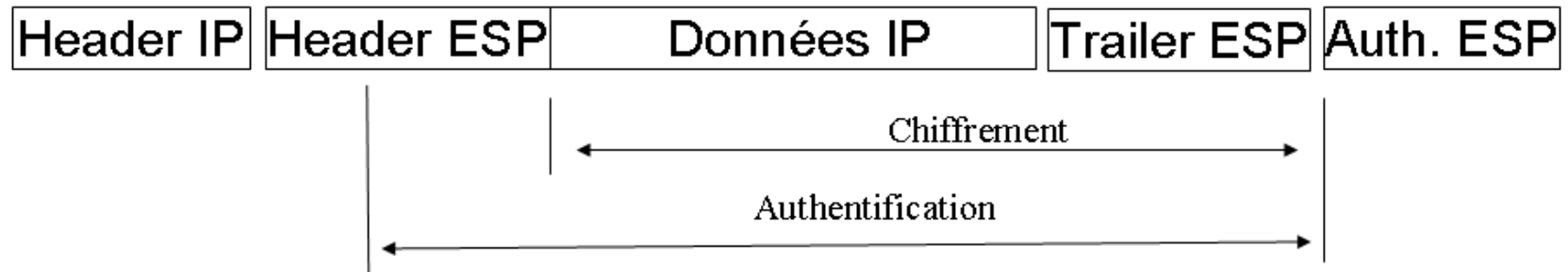


Encapsulating Security Payload

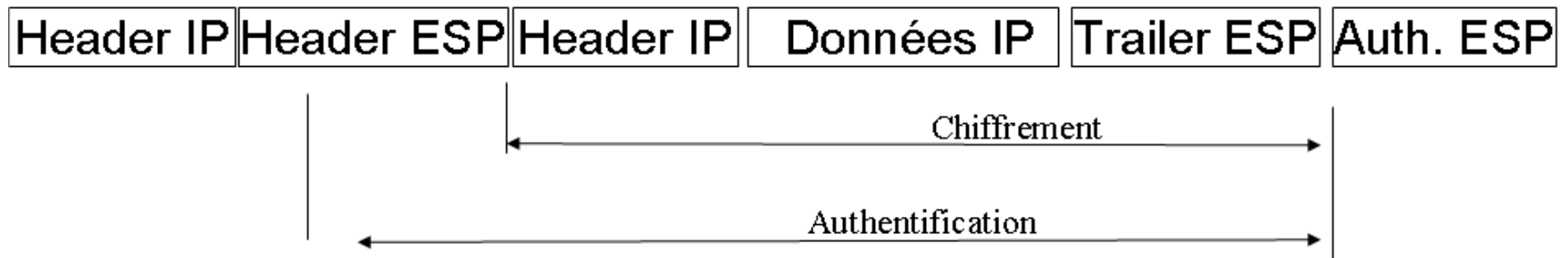


IPSEC: Mode Transport et Mode Tunnel

Mode transport



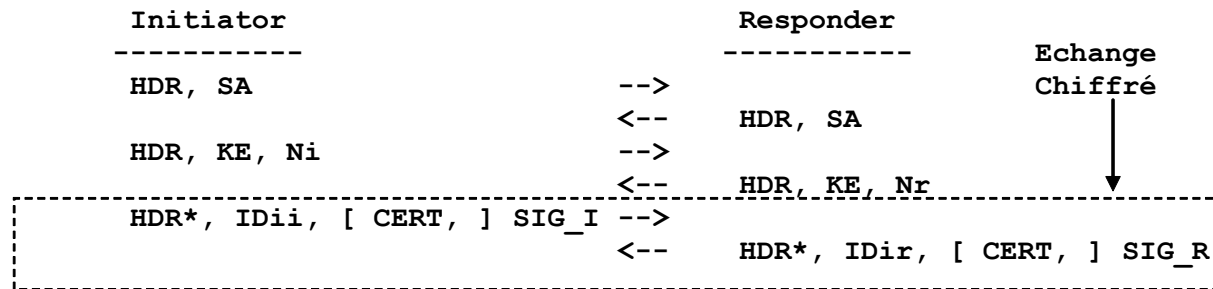
Mode tunnel



Au sujet de IKEv1

- Internet Key Exchange
- RFC 2409, 1998
- IKE PHASE 1 réalise une association de sécurité ISAKMP entre deux systèmes, qui protège les échanges de IKE phase 2
 - 4 modes, Main Mode, Aggressive Mode, Quick Mode, New Group Mode
 - Plusieurs protocoles d'échanges de clés
 - Asymétriques, OAKLEY et SKEME
 - Symétrique (Pre-Shared-Key)
- IKE PHASE 2 réalise une association de sécurité pour des sessions IPSEC

IKEv1, Pre-Shared-Keys, Main Mode



For pre-shared keys:

$$\text{SKEYID} = \text{prf}(\text{pre-shared-key}, \text{Ni}_b \mid \text{Nr}_b)$$

The result of either Main Mode or Aggressive Mode is three groups of authenticated keying material:

$$\begin{aligned} \text{SKEYID}_d &= \text{prf}(\text{SKEYID}, g^{xy} \mid \text{CKY-I} \mid \text{CKY-R} \mid 0) \\ \text{SKEYID}_a &= \text{prf}(\text{SKEYID}, \text{SKEYID}_d \mid g^{xy} \mid \text{CKY-I} \mid \text{CKY-R} \mid 1) \\ \text{SKEYID}_e &= \text{prf}(\text{SKEYID}, \text{SKEYID}_a \mid g^{xy} \mid \text{CKY-I} \mid \text{CKY-R} \mid 2) \end{aligned}$$

and agreed upon policy to protect further communications. The values of 0, 1, and 2 above are represented by a single octet. The key used for encryption is derived from SKEYID_e in an algorithm-specific manner.

To authenticate either exchange the initiator of the protocol generates HASH_I(SIG_I) and the responder generates HASH_R(SIG_R)

where:

$$\begin{aligned} \text{HASH}_I &= \text{prf}(\text{SKEYID}, g^{xi} \mid g^{xr} \mid \text{CKY-I} \mid \text{CKY-R} \mid \text{SAi}_b \mid \text{IDii}_b) \\ \text{HASH}_R &= \text{prf}(\text{SKEYID}, g^{xr} \mid g^{xi} \mid \text{CKY-R} \mid \text{CKY-I} \mid \text{SAi}_b \mid \text{IDir}_b) \end{aligned}$$

SAi_b is the entire body of the SA payload (minus the ISAKMP generic header), all proposals and all transforms offered by the Initiator.
CKY-I and *CKY-R* are the Initiator's cookie and the Responder's cookie, respectively, from the ISAKMP header.
g^{xi} and *g^{xr}* are the Diffie-Hellman public values of the initiator and responder respectively.

IKeV1, Phase II, Pre-Shared-Key, Quick Mode

```
Initiator                                     Responder
-----                                     -----
HDR*, HASH(1), SA, Ni [, KE ] [, IDci, IDcr ] -->
                                     <-- HDR*, HASH(2), SA, Nr [, KE ] [, IDci, IDcr]
HDR*, HASH(3) -->
```

```
HASH(1) = prf(SKEYID_a, M-ID | SA | Ni [ | KE ] [ | IDci | IDcr ] )
HASH(2) = prf(SKEYID_a, M-ID | Ni_b | SA | Nr [ | KE ] [ | IDci | IDcr ] )
HASH(3) = prf(SKEYID_a, 0 | M-ID | Ni_b | Nr_b)
```

```
KEYMAT = prf(SKEYID_d, protocol | SPI | Ni_b | Nr_b)
```

IDci, IDcr, identités, les adresses IP en fait.

M-ID, identifiant du message, extrait de l'en tête ISAKMP

SSL/TLS

Historique

- SSL défini par *netscape* et intégré au browser
 - Première version de SSL testé en interne
 - Première version de SSL diffusé : V2 (1994)
 - Version actuelle V3
- Standard à l'IETF au sein du groupe Transport Layer Security (TLS)
- "The TLS Protocol Version 1.0", RFC 2246, January 1999
- "The Transport Layer Security (TLS) Protocol Version 1.1", RFC 4346, April 2006
- "Datagram Transport Layer Security", RFC 4347, April 2006
- "The Transport Layer Security (TLS) Protocol Version 1.2", RFC 5246, August 2008
- "Datagram Transport Layer Security Version 1.2", RFC 6347, January 2012

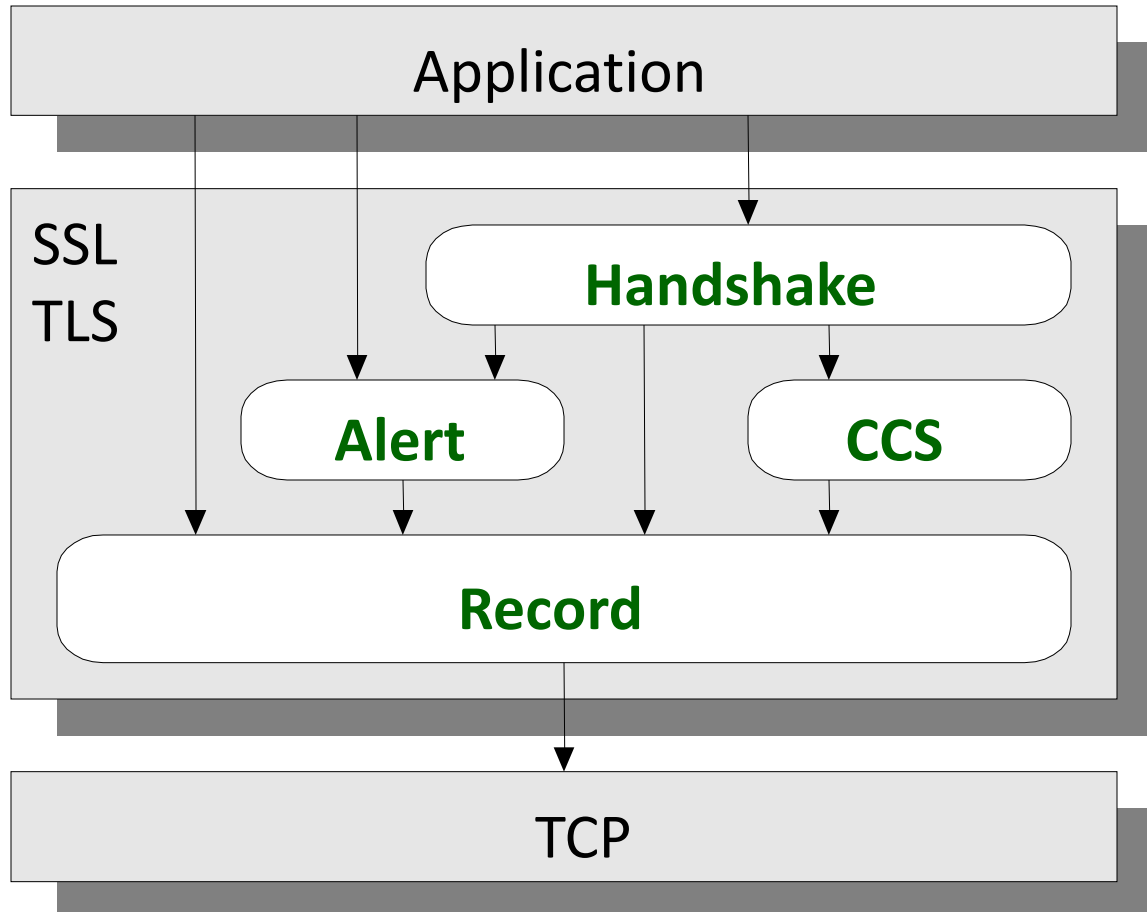
SSL : Services

- Authentification
 - Serveur (obligatoire), client (optionnel)
 - Utilisation de certificat X509 V3
 - A l'établissement de la session.
- Confidentialité
 - Algorithme de chiffrement symétrique négocié, clé générée à l'établissement de la session.
- Intégrité
 - Fonction de hachage avec clé secrète :
HMAC(clé secrète, Message)
- Non Rejeu
 - Numéro de séquence

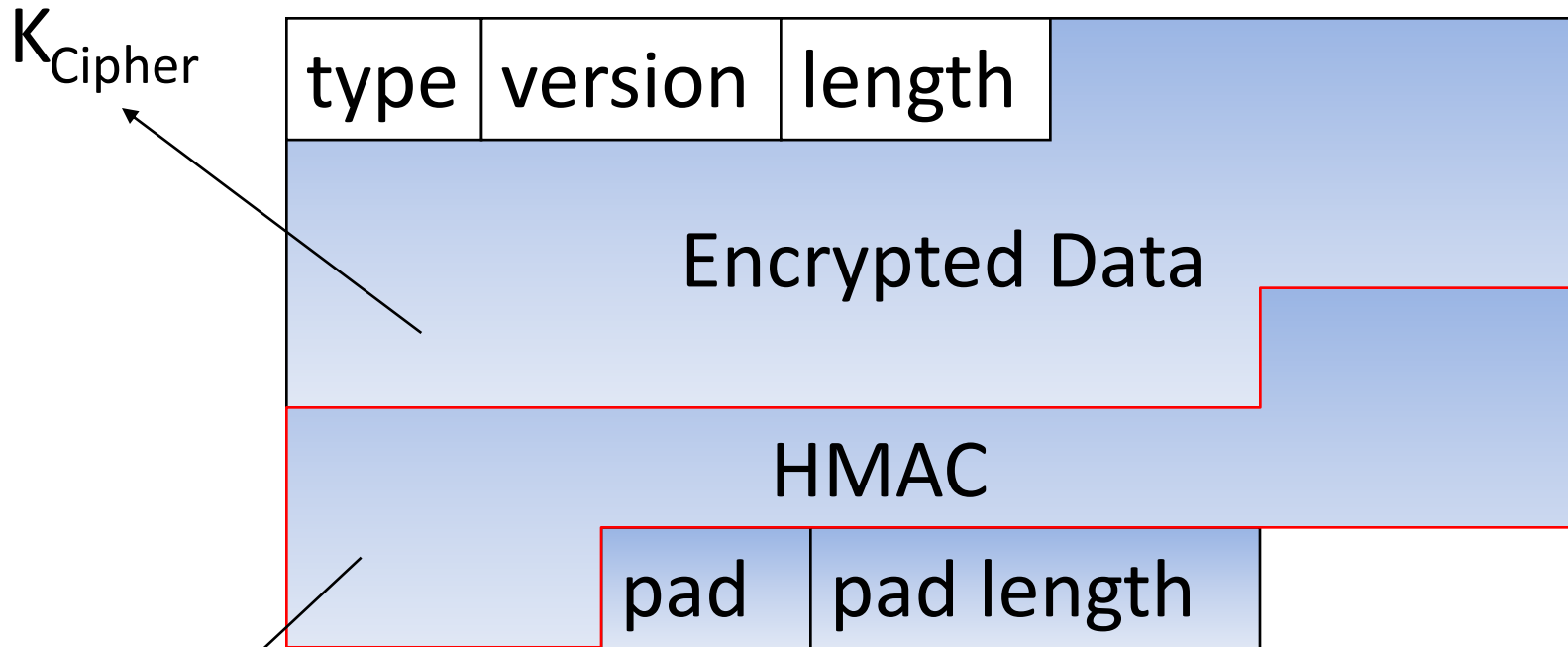
Version de TLS

- TLS 1.0
 - Structure des messages est compatible avec SSLv2, SSLv 3
 - Les fonctions cryptographiques (PRF...) sont différentes de celles de SSL
 - MD5, SHA1, HMAC-MD5, HMAC-SHA1
 - DH, RSA
 - Mode CBC avec IV fixe
- TLS 1.1
 - Les extensions TLS sont supportées (rfc 4366, rfc 6066)
 - En mode CBC le IV est généré pour chaque Record Packet et transmis
- TLS 1.2
 - Support de hmac_sha256, hmac_sha384, hmac_sha512 pour le PRF et le HMAC
 - Signature sha256, sha384, sha512 pour le client
 - Les courbes elliptiques sont supportées

SSL/TLS : Protocoles



Record Layer



$MAC = hmac(K_{auth},$
 $uint64_seq_num || type || version$
 $|| length || message)$

Flights TLS : Full Mode

```
Client
-----
flight1 ->
(TLS client-hello)
```

```
flight 3 ->
(TLS certificate,
 TLS client-key-exchange,
 TLS certificate-verify,
 TLS change-cipher-spec,
 TLS finished)
```

```
Serveur
-----
<- flight 2
(TLS server-hello,
 TLS certificate,
 TLS server-key-exchange,
 TLS certificate-request,
 TLS server-hello-done)
```

```
<- flight 4
(TLS change-cipher-spec,
 TLS finished)
```

Flights TLS: Resume Mode

```
Client
-----
flight1 ->
(TLS client-hello)
```

```
Serveur
-----
<- flight 2
(TLS server-hello,
 TLS change-cipher-spec,
 TLS finished)
```

```
flight 3 ->
(TLS change-cipher-spec,
 TLS finished)
```

Key Exchange

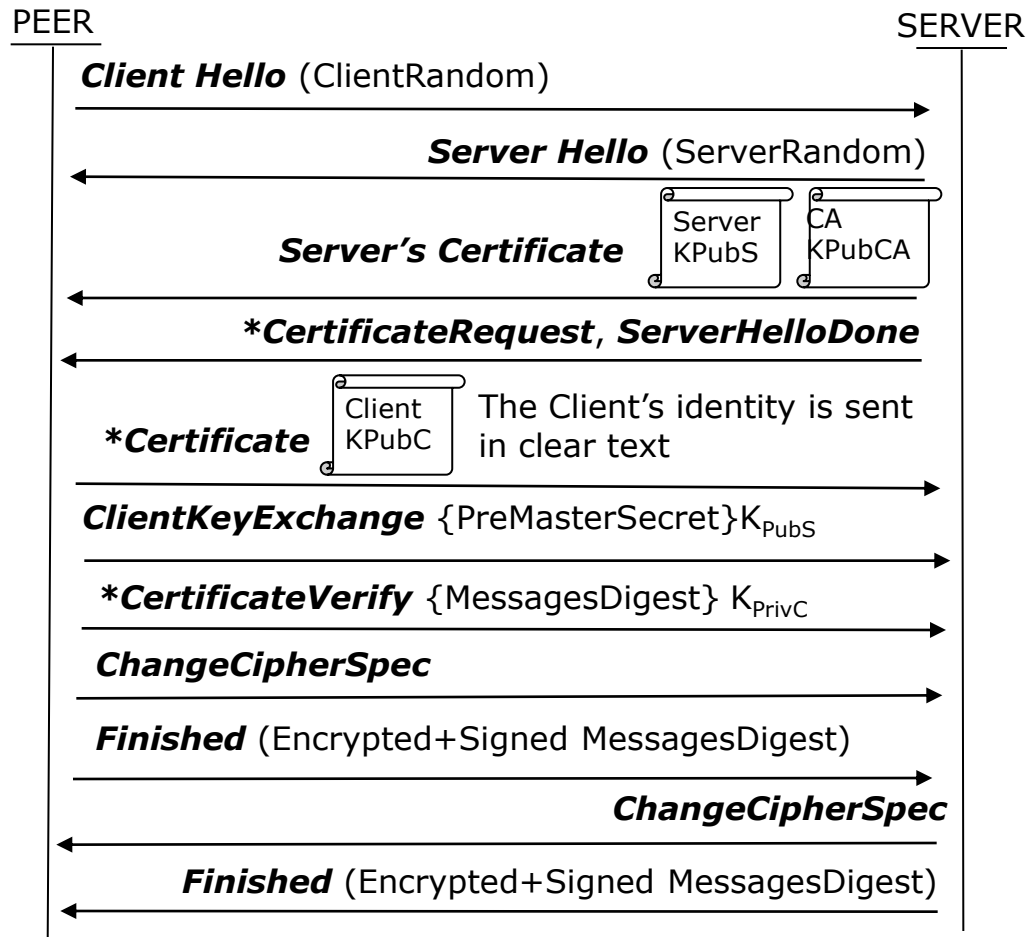
```
struct {  
  
    select (KeyExchangeAlgorithm)  
    {  
        case diffie_hellman:  
            ServerDHParams params;  
            Signature signed_params;  
  
        case rsa:  
            ServerRSAParams params;  
            Signature signed_params; };  
    } ServerKeyExchange;
```

```
struct {  
  
    select (KeyExchangeAlgorithm)  
    {  
        case rsa: EncryptedPreMasterSecret;  
  
        case diffie_hellman: DiffieHellmanClientPublicValue;  
    } exchange_keys;  
  
    } ClientKeyExchange;
```

Messages Handshake

```
struct
{ HandshakeType msg_type;
  /* handshake type */ uint24 length;
  /* bytes in message */
  select (HandshakeType)
  { case hello_request: HelloRequest;
    case client_hello: ClientHello;
    case server_hello: ServerHello;
    case certificate: Certificate;
    case server_key_exchange: ServerKeyExchange;
    case certificate_request: CertificateRequest;
    case server_hello_done: ServerHelloDone;
    case certificate_verify: CertificateVerify;
    case client_key_exchange: ClientKeyExchange;
    case finished: Finished; }
  body;
} Handshake;
```

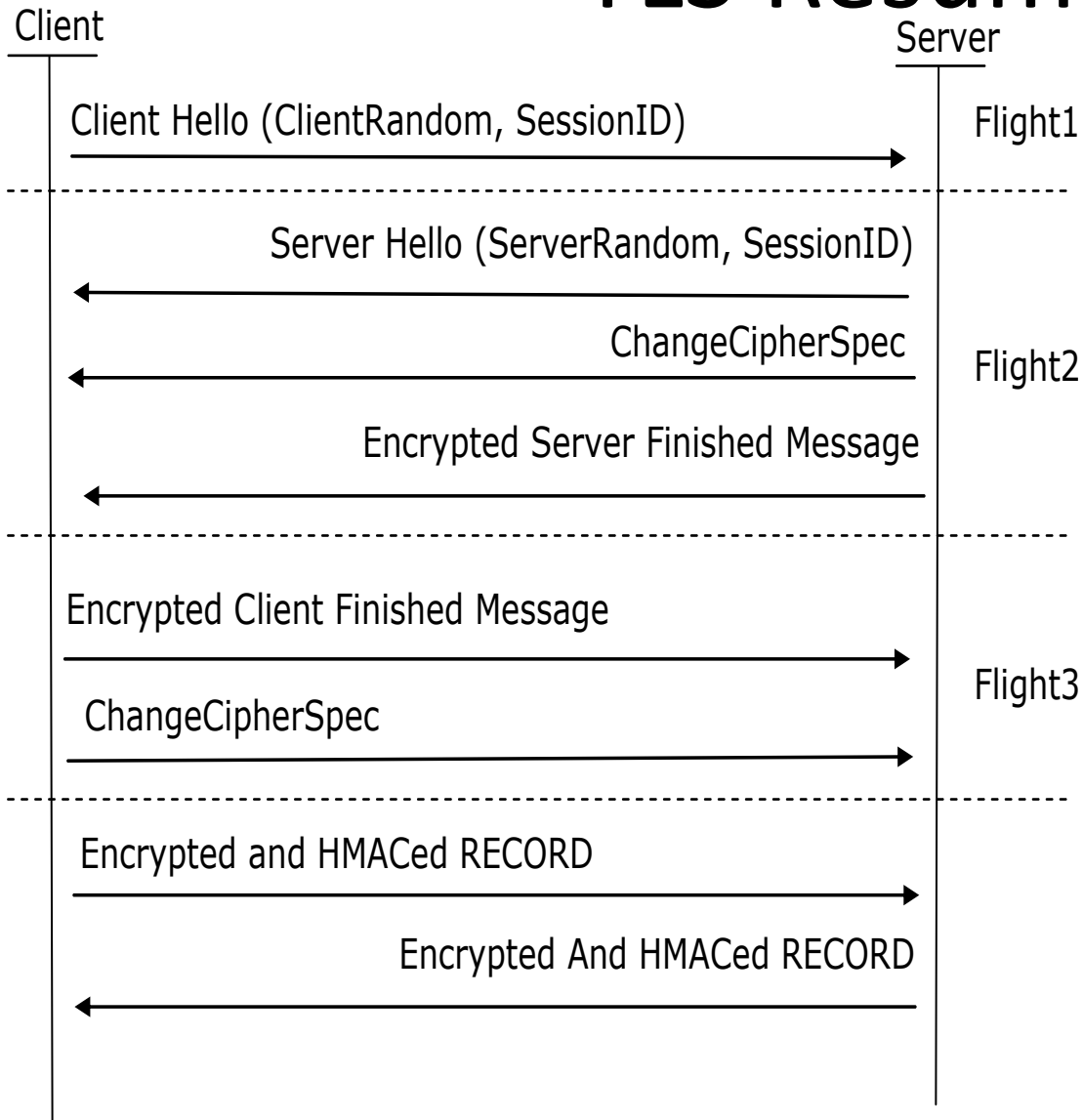
SSL/TLS, Dialogue de base



MasterSecret= PRF(ClientRandom, ServerRandom, PreMasterSecret,...)

Keys = PRF(ClientRandom, ServerRandom, MasterSecret,...)

TLS Resume Mode



Keys = PRF(ClientRandom, ServerRandom, MasterSecret,...)

DTLS

DTLS: Record Layer

Content Type	Protocol Version	Epoch
Epoch	Sequence Number	
Sequence Number		Length
Length		
Message		

```
struct {  
    ContentType type;  
    ProtocolVersion version;  
    uint16 epoch;  
    uint48 sequence-number;  
    uint16 length;  
    opaque fragment[DTLSPlaintext.length];  
} DTLSPlaintext;
```

DTLS MAC

/* The DTLS MAC is the same as that of TLS 1.1. However, rather than using TLS's implicit sequence number, the sequence number used to compute the MAC is the 64-bit value formed by concatenating the epoch and the sequence number in the order they appear on the wire.

Note

that the DTLS epoch + sequence number is the same length as the TLS sequence number.

*/

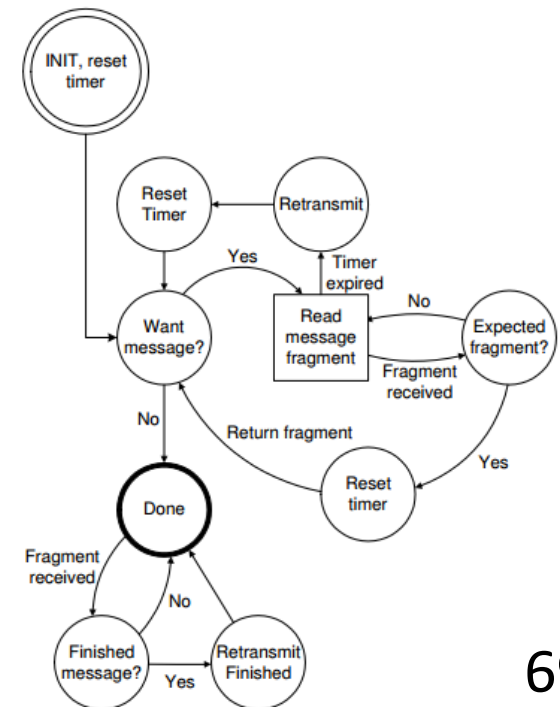
```
HMAC_(Kauth,seq_num + || type || version || length || message )
```

DTLS: Fragmentation des messages

Handshake

- Tous les calculs cryptographiques sont réalisés avec des messages non fragmentés
- Le paramètre message-sequence est ignoré

```
HandshakeType msgtype;  
uint24 length;  
uint16 message-sequence;  
uint24 fragment-offset;  
uint24 fragment-length;  
[Handshake Message]
```



Flights DTLS

Client

```
flight1 ->
(DTLS client-hello)
```

```
flight 3_>
(DTLS client-hello
with cookie)
```

```
flight 5 ->
(DTLS certificate,
DTLS client-key-exchange,
DTLS certificate-verify,
DTLS change-cipher-spec,
DTLS finished)
```

Serveur

```
<- Flight 2
(DTLS Hello-Verify-Request
contains cookie)
```

```
<- flight 4
(DTLS server-hello,
DTLS certificate,
DTLS server-key-exchange,
DTLS certificate-request,
DTLS server-hello-done)
```

```
<- flight 6
(DTLS change-cipher-spec,
DTLS finished)
```

DTLS Session Full

(record sequence number,
epoch,
handshake sequence number)

