

Nervous System Exploration Using Tractography To Enhance Pelvic Surgery

Cécile Olivia MULLER*, **Alessandro DELMONTE***, **Pierre MEIGNAN**, **Quoc PEYROT**, **Alessio VIRZI**, **Laureline BERTELOOT**, **David GREVENT**, **Thomas BLANC**, **Pietro GORI**, **Nathalie BODDAERT**, **Isabelle BLOCH**, **Sabine SARNACKI**

IMAG2 Laboratory, Imagine Institute, Paris, France

Université Paris Descartes, Paris, France

Pediatric Surgery and Radiology Departments, Necker Hospital, APHP, Paris, France

LTCI, Télécom ParisTech, Université Paris-Saclay, Paris, France

Contact: sabine.sarnacki@aphp.fr

Pelvic surgery raises the challenge of preservation of nerves that handle urinary, genital and digestive functions, especially in situations where these structures may be modified by tumors or malformations. Recent works on 3D nerve visualization, that rely on cadavers dissections [1, 3] or intra-operative use of probes detecting myelin-binding fluorophores [5], do not provide pre- or post-operative analysis of the pelvic nervous anatomy. Magnetic resonance neurography as in [12] requires a slice by slice manual segmentation of the nerves. Diffusion MRI, associated with tractography algorithms, is currently the only technique allowing for in-vivo exploration of the nervous network [2] with no need for manual nerve segmentation. In contrast to brain imaging that motivated a lot of work, only few studies focus on peripheral nerves visualization [9, 10, 14]. In this paper, we propose a method for pelvic tractography analysis based on patient-specific organ segmentation. It is demonstrated with promising results on a healthy adult subject.

1 Anatomy of the Pelvic Nervous Network

The pelvis region is a complex 3D structure gathering urinary, genital and digestive systems (see e.g. [8]). These systems are both irrigated and innervated by an intricate network of vessels and nerves, enclosed

by a tight bony and muscular cage (Fig. 1). Somatic functions of pelvic organs are ensured by a ramified nervous network, originating from the spine and issuing from L4-L5 vertebral canals and S1-S4 sacral holes. Autonomous functions are ensured by the presacral sympathetic/parasympathetic networks originating from neural crest migration. Being directly involved in both conscious and unconscious motricity and sensitivity of organs and skin, the main nerve bundles to be preserved during surgical operations are the sacral plexus, pudendal plexus, pudendal nerve, and inferior hypogastric plexus.

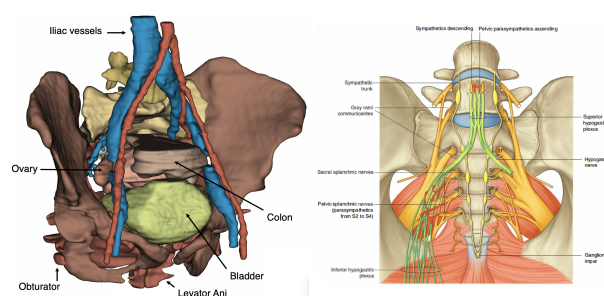


Figure 1: *Left: Pelvis 3D model for an adult healthy female subject. Right: Pelvic somatic and autonomous nerves [8].*

2 Methods

The complexity of the nervous network anatomy makes it difficult both to observe using standard CT and MRI sequences, and to analyze, thus limiting the de-

*A. Delmonte and C. Muller contributed equally to this work.

velopment of nerve preservation techniques in pelvic surgery. The proposed method relies on a combination of anatomical and diffusion MRI sequences, segmentation of anatomical structures, and recognition of the nerves from tractography based on their spatial arrangement.

2.1 Data Preparation

The data used to illustrate the method are MRI images of an adult healthy female subject. A volumetric T2w image (with a voxel size of $0.625 \times 1 \times 0.625 \text{ mm}^3$) was used for the organ segmentation. A DWI image was acquired with 50 directions, $b = 1000$, voxel size of $2.5 \times 2.5 \times 3.5 \text{ mm}^3$, and a tractogram was computed using a diffusion tensor based algorithm, with the software MRTrix3 [13]. To avoid inherent limitations of ROI based pelvic tractography (e.g. lack of reliable seeds positioning due to noise issues) [10] limiting tractograms accuracy, we selected seeds sparsely in a whole-body mask. The parameters were set as follows: seeds condition $FA > 0.15$, termination condition $FA < 0.01$, fibers length = $50 - 800 \text{ mm}$. The final whole-body tractogram was composed by one million fibers.

2.2 Organ Segmentation

Pelvic organs segmentation (Fig. 1) was manually performed by an expert surgeon on the T2w image within the 3DSlicer [11] environment. The segmented regions were: pelvic bones (hips and sacrum) and muscles (piriformis, coccygeal, obturator and levator ani), bladder with the ureters, genital system (vagina, uterus and ovaries), colon and rectum, iliac vein and arteries. In order to provide additional spatial references to the tractography segmentation algorithm, specific regions of interest for nerves (sacral canal, sacral holes and ischial spine) were subsequently identified in the image.

2.3 Tractogram Processing and Nerve Recognition

Due to the huge amount of false positives encountered in whole-body tractograms, we introduce a filtering algorithm that exploits spatial relations between nerve bundles and segmented anatomical structures. The core of the contribution is the recognition of each nerve bundle based on directional, path, connectivity and orientation information. For instance, S4 is described as “crossing `SacralHoleS4` and crossing `SacrumCanal`”. Similar descriptions have been developed for all nerve bundles of interest. Translating these descriptions, expressed in natural language, into operational algorithms requires modeling each spatial relation. An approach based on simple relations between bounding boxes of organs, as proposed in [15] for brain white matter, is not sufficiently accurate given the complexity of the pelvic structures. Therefore, we propose to rely on the previous segmentation, and on fuzzy definitions of

spatial relations [4], similarly to [6, 7]. For instance, a directional relation with respect to a given structure is modeled as a cone originating from this structure and oriented in the desired direction, and a fiber in this cone satisfies the directional relation to the structure. A recognized bundle is then a set of fibers satisfying the description.

3 Results

Sacral Plexus (from L5 to S4), Pudendal Plexus (P) and Inferior Hypogastric Plexus (IHP) are represented in Fig. 2 along with relevant structures. Optimal concordant anatomical results were obtained for the sacral plexus, including sacral root S4. The pudendal nerve, originating from the pudendal plexus, was not viewed in its entirety until the pubic junction. The inferior hypogastric plexus is a thin but rich nervous network which was not completely represented either. The use of higher resolution diffusion images could further improve the results.

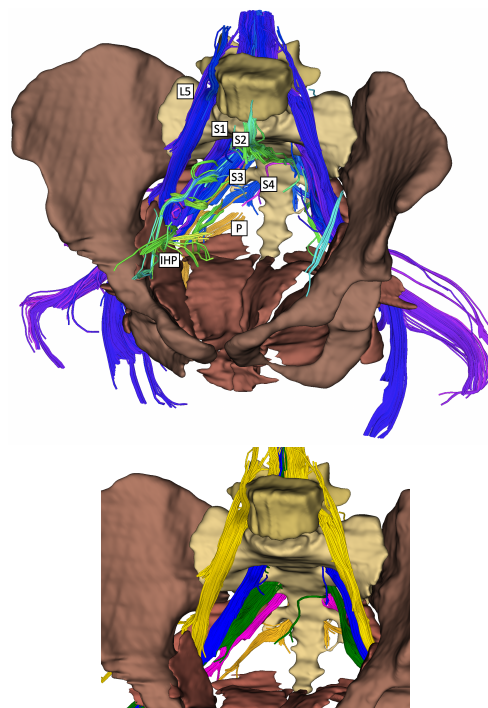


Figure 2: *Top: Sacral (Blue), Pudendal (Orange) and Hypogastric (Green) plexuses obtained with the proposed method. Bottom: Sacral Plexus detail.*

4 Conclusion

This preliminary study demonstrates the feasibility to visualize both somatic and autonomous pelvic nervous network using in-vivo tractography techniques. We are currently evaluating applications for surgical planning and post-operative follow-up in pediatric cases of pelvic malformations and tumors.

References

- [1] V. Balaya, F. Guimiot, J. F. Uhl, C. Ngo, M. Delomenie, H. Bonsang-Kitzis, M. Gosset, M. Mimouni, A. S. Bats, V. Delmas, R. Douard, and F. Lécure. Three-Dimensional Modelization of the Female Human Inferior Hypogastric Plexus: Implications for Nerve-Sparing Radical Hysterectomy. *Gynecological and Obstetric Investigation*, 2018.
- [2] P. J. Basser, S. Pajevic, C. Pierpaoli, J. Duda, and A. Aldroubi. In vivo fiber tractography using DT-MRI data. *Magnetic Resonance in Medicine*, 44(4):625–632, 2000.
- [3] M. M. Bertrand, F. Macri, R. Mazars, S. Droupy, J. P. Beregi, and M. Prudhomme. MRI-based 3D pelvic autonomous innervation: a first step towards image-guided pelvic surgery. *European Radiology*, 24(8):1989–1997, 2014.
- [4] I. Bloch. Fuzzy Spatial Relationships for Image Processing and Interpretation: A Review. *Image and Vision Computing*, 23(2):89–110, 2005.
- [5] V. E. Coterio, S. Y. Kimm, T. M. Siclovan, R. Zhang, E. M. Kim, K. Matsumoto, T. Gondo, P. T. Scardino, S. Yazdanfar, V. P. Laudone, and C. A. Tan Hehir. Improved Intraoperative Visualization of Nerves Through a Myelin-Binding Fluorophore and Dual-Mode Laparoscopic Imaging. *PloS One*, 10(6):1–18, 2015.
- [6] A. Delmonte, I. Bloch, D. Hasboun, C. Mercier, J. Pallud, and P. Gori. Segmentation of White Matter Tractograms Using Fuzzy Spatial Relations. In *Organization for Human Brain Mapping (OHBM)*, Singapore, 2018.
- [7] A. Delmonte, C. Mercier, J. Pallud, I. Bloch, and P. Gori. White matter multi-resolution segmentation using fuzzy set theory. In *IEEE International Symposium on Biomedical Imaging (ISBI)*, Venice, Italy, 2019.
- [8] R. L. Drake, W. Vogl, A. Mitchell, and H. Gray. *Gray's Anatomy for Students*. Churchill Livingstone/Elsevier, Philadelphia, 41st edition, 2015.
- [9] D. S. Finley, B. M. Ellingson, S. Natarajan, T. M. Zaw, S. S. Raman, P. Schulam, R. E. Reiter, and D. Margolis. Diffusion Tensor Magnetic Resonance Tractography of the Prostate: Feasibility for Mapping Periprostatic Fibers. *Urology*, 80(1):219–223, 2012.
- [10] W. Haakma, J. Hendrikse, L. Uhrenholt, A. Leemans, L. Warner Thorup Boel, M. Pedersen, and M. Froeling. Multicenter reproducibility study of diffusion MRI and fiber tractography of the lumbosacral nerves: DTI of the Lumbosacral Nerves. *Journal of Magnetic Resonance Imaging*, 48(4):951–963, 2018.
- [11] R. Kikinis, S. D. Pieper, and K. G. Vosburgh. 3D Slicer: A Platform for Subject-Specific Image Analysis, Visualization, and Clinical Support. *Intraoperative Imaging and Image-Guided Therapy*, 3(19):277–289, 2014.
- [12] P. Li, P. Liu, C. Chen, H. Duan, W. Qiao, and O. H. Ognami. The 3D reconstructions of female pelvic autonomic nerves and their related organs based on MRI: a first step towards neuronavigation during nerve-sparing radical hysterectomy. *European Radiology*, 28(11):4561–4569, 2018.
- [13] J. D. Tournier, F. Calamante, and A. Connelly. MRtrix: Diffusion tractography in crossing fiber regions. *International Journal of Imaging Systems and Technology*, 22(1):53–66, 2012.
- [14] P. K. N. van der Jagt, P. Dik, M. Froeling, T. C. Kwee, R. A. J. Nieuvelstein, B. ten Haken, and A. Leemans. Architectural configuration and microstructural properties of the sacral plexus: a diffusion tensor MRI and fiber tractography study. *NeuroImage*, 62(3):1792–1799, 2012.
- [15] D. Wassermann, N. Makris, Y. Rathi, M. Shenton, R. Kikinis, M. Kubicki, and C. F. Westin. On describing human white matter anatomy: the white matter query language. In *International Conference on Medical Image Computing and Computer-Assisted Intervention (MICCAI)*, volume LNCS 8149, pages 647–654, 2013.